

Enqura

AI Driven Financial Technology Platform



Leading the Evolution of Financial Services, Enqura's AI-Driven Approach Keeps Customers One Step Ahead Of Fraud, Regulations and Customer Expectations

with Cutting-edge Technologies Designed for the Future.

01

State-of-the-Art & AI Integrated ensures smarter, scalable, and secure solutions.



02

AI-Driven Innovation ensures we lead, not follow, in fintech evolution.



03

Shared Success Commitment turns customer goals into our own achievements.



04

Trusted Globally with products aligned to **ISO, NIST, COBIT, SOX.**



Bank . Neobanks . Fintechs . Insurance . Crypto . Brokerage Companies



EnNovate

Mobile & Web Channels

Use cases:

Mobile & Online Banking

Mobile & Web Fintech Apps

Mobile & Web Insurance Apps

Main Challenges

Enqura

Legacy technologies hinders the adoption of modern advancements, limiting user experience and operational efficiency.



UNSUSTAINABLE INFRASTRUCTURE

Subpar User Experience

Complex, non-intuitive interface

High Maintenance Costs

Expensive upkeep, slow updates

Limited Flexibility

Rigid, outdated customization options

Security Vulnerabilities

Prone to breaches, outdated protocols

Digital Channels for Finance & Insurance

Enqura

- MOBILE & WEB APPLICATIONS
- SUITABLE TO OPERATE WITH ENWALLET OR OTHER CORE SYSTEMS
- OMNI CHANNEL MANAGEMENT MIDDLEWARE
- 200 + FEATURES SUPPORTED FOR FINTECHS & INSURTECHS
- 18 CONTRACTED ENTERPRISE CLIENT
- SUPPORTS BANKING AS A SERVICE (BAAS) MODEL

Flexible and innovative digital channels for banking fintech and insurance industries

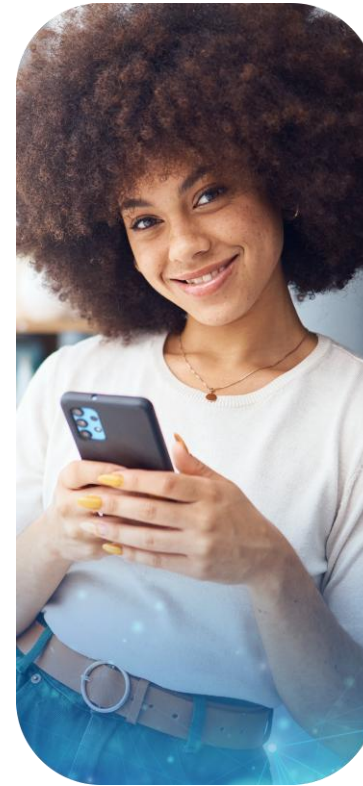


EnNovate Features & Advantages

Enqura

Features

- Multi Language
- Registration & Authentication
- Dynamic Menu
- IOS & Android Native
- React & Flutter Support
- KYC & KYB Ready
- MFA Ready
- Open Banking Ready
- Wallet Ready
- Push Notification Send
- 3rd Party Application Integration
- Integration Layer Parameter Management Resource Management
- Pre-paid Wallet
- Add Blog + Blog Management
- Business Account Management
- Branches And Staff Management For Business Users



Technical Advantages

- Micro Service Architecture
- Declarative Integration
- On-prem Supports
- Cloud & Saas Supports
- MS SQL, ORACLE, Postgre SQL
- Docker Cubernetes Compatible
- .Net Core

EnNovate References

Enqura

PayPole

Hakan Saygın

Paypole - Chairman on the Board & General Manager

For our mobile and web applications, we chose EnNovate because they meet all our needs and are user-friendly. With these products, which have emerged by blending professionalism and experience, our customers can carry out their transactions quickly and smoothly.

Enqura **THANK YOU**

www.enqura.com / sales@enqura.com