

temenos.com

TLC Online Learning Packs



temenos

Everyone's Banking Platform

TLC Online

Learning Pack Content & Costs

When you become a TLC Online member you will have access to the TLC Online platform where you can manage your digital profile and interact with our other members. But most importantly it provides you with the opportunity to purchase one or more of our learning packs, listed below, providing one year of unlimited, 24x7 access to upskill, train, test and certify yourself in the specialist areas that matter to you and your organisation. This document outlines what each pack contains.

This document describes new certification focused Learning Pathways. Please see Pathways Brochure for details.



Premium Pack

Courses: 1000+

Annual Cost: \$2,000.00



Transact Core Banking

Courses: 588

Annual Cost: \$1,400.00



Infinity — Digital Front Office

Courses: 100

Annual Cost: \$1,400.00



Wealth Management

Courses: 249

Annual Cost: \$1,400.00



Payments

Courses: 132

Annual Cost: \$800.00



Fund Administration

Courses: 138

Annual Cost: \$800.00



Analytics

Courses: 77

Annual Cost: \$800.00



Financial Crime Mitigation

Courses: 41

Annual Cost: \$800.00



Transact Migration

Courses: 146

Annual Cost: \$800.00



Transact Upgrade

Courses: 52

Annual Cost: \$800.00



Project Manager

Courses: 59

Annual Cost: \$800.00

Next Steps

New to TLC Online?

To access and pay for any of our Learning packs, please ask to [become a member here](#) and our team will contact you with instructions. You may also speak to your company's training representative to organise payment via invoice. Once you have activated your membership, you may [log into the TLC Online platform here](#).

For more information please contact: tlcenquiries@temenos.com



Certifications by Learning Pack



Premium Pack

Individual Certifications

Code

Credits

Individual Certifications

Code

Credits

1	FATCA	T3TFA	20
2	IFRS (International Financial Reporting Standards)	T3TIA	20
3	Insight Risk (ALM)	T3TIRALM	20
4	Insight Risk (Market Risk)	T3TIRMR	20
5	Insight Risk (Regulatory Capital)	T3TIRRC	40
6	AA Based	T3ISAAT24	20
7	Arrangement Architecture Accounts	T3TAAR	40
8	Arrangement Architecture Agency Commission	T3TAAAG	20
9	Arrangement Architecture Deposits	T3TAAD	40
10	Arrangement Architecture Loans	T3TAAL	40
11	Arrangement Architecture Rewards	T3RW	20
12	Balance Netting	T3TBN	40

13	Business Events Management	T3TBE	20
14	Cash Pooling (Liquidity Management)	T3TPO	20
15	Channels - ARC Internet Banking	T3ARCIB	40
16	Channels - ARC Mobile Banking	T3ARCMB	40
17	Close Of Business Management	T3TCM	40
18	Collateral	T3TCO	40
19	Collection	T3TCL	20
20	Common Reporting Standard	T3CRS	20
21	Connectors	T3TC	40
22	Core - Induction Business	T1ESL-2-B	20
23	Core - Induction Technical	T1ESL-1-T	20



Premium Pack

Individual Certifications

Code

Credits

24	Corporate Lending	T3TAACL	40
25	Customer Data Protection and Consent Management	T3TCDP	20
26	Derivatives	T3TDX	40
27	Event Framework - Inflow	T3FL	20
28	External BPM	T3BPM	20
29	Factoring and Forfaiting (Bills)	T3TBL	20
30	Fiduciary	T3TFD	20
31	Financial Inclusion Business	T3FIBU	20
32	Financial Inclusion Utilities	T3FIUT	20
33	Financial Reporting	T3TRE	40
34	Forex	T3TFX	40
35	Forward Rate Agreements	T3TFR	20
36	Front Office Asset Management	T3TAM	40
37	Front Office Delivery	T3DEL	40

Individual Certifications

Code

Credits

38	Front Office Document Management	T3DM	20
39	Front Office Securities Administration and Trading - Advanced	T3TSCTA	40
40	Front Office Securities Administration and Trading - Basic	T3TSCTB	40
41	Inclusive Banking Suite Business	T3IBSBU	60
42	Inclusive Banking Suite Utilities	T3IBSUT	20
43	Interaction Data Services	T3DSD	20
44	Interest Taxes and Charges	T3TIC	40
45	jBASE	T3JB	40
46	LD Based	T3ISLDT24	40
47	Letters of Credit (Trade Finance)	T3TLC	80
48	Loans and Deposits	T3TLD	40
49	Miscellaneous Deals	T3TMD	40
50	Money Market	T3TMM	40
51	Multi Company - Multi-Book	T3TMC	20



Premium Pack

Individual Certifications

Code

Credits

52	Mutual Funds	T3TMF	40
53	Past Dues	T3TPD	40
54	Position Management	T3TPM	20
55	Process Workflow	T3PW	40
56	Relational Replication	T3RR	40
57	Repos	T3TRP	40
58	Retail Sweeping	T3TRS	20
59	Structured Products	T3TSY	40
60	Swaps	T3TSW	20
61	Syndicated Loans	T3TSL	40
62	Temenos Transact Packaging with Temenos Packager	T3TTP	20
63	tOP Enterprise Monitoring	T3tOP	20
64	Universal Performance Metrics	T3UPM	20
65	Arrangement Architecture Core	T3AAC	40

Individual Certifications

Code

Credits

66	Arrangement Architecture Core - Technical	T3AACT	20
67	Data Migration	T3DMG	80
68	Multi-Tenancy	T3MT	20
69	Open Financial Service	T3OFS	40
70	Web Services	T3TWS	20
71	Administration	T3TAD	40
72	Customisation	T3CUS	80
73	Extensibility for Java	T3TECJ	20
74	Oracle Administration and Performance Tuning	T3ORA	40
75	Programming	T3PRG	80
76	Security Management System	T3SMS	40
77	TAFJ	T3TAFJ	40
78	TAFJ Integration Framework	T3TIF	20
79	Temenos Open Connectivity Framework (TAFC)	T3TOCF(EF)	20



Premium Pack

Individual Certifications

Code

Credits

80	Upgrade	T3UPG	40
81	Cheque and Draft Issue Management	T3TCI	20
82	Direct Debits	T3TDD	20
83	Funds Transfer	T3TFT	40
84	Payment Order Preliminary	T3TPI	40
85	Teller	T3TTT	40
86	Temenos Payments Basics	T3TPB	40
87	Temenos Payments Hub - Standalone System	T3STAL	20
88	Core - Customer Relationship Management	T3CRM	40
89	Core Accounts	T3TAC	40
90	Design Studio for Core Change Management	T3DST24	20
91	Financial Accounting	T3TFI	80
92	Limits	T3TLI	40
93	Securities Back Office - Advanced	T3TSCBA	40

Individual Certifications

Code

Credits

94	Securities Back Office - Basic	T3TSCBB	40
95	Securities Back Office - Corporate Actions	T3TSCCA	40
96	Channels Digital Engagement	T3DE	40
97	Channels PM Advisory	CH1PMADV	20
98	Channels PM B2F	CH1PMB2F	20
99	Channels PM F2B	CH1PMF2B	20
100	Front Office PM Advanced Performance Analysis Attribution	FO2PMPAA	20
101	Front Office PM Advanced Performance Analysis Standard	FO2PMPAS	20
102	Front Office PM Constraints Management	FO2PMACM	20
103	Front Office PM Data Administration and Securities	FO2PMDAS	20
104	Front Office PM Operations and Positions	FO2PMOPP	20
105	Front Office PM Order Management	FO2PMOMT	20
106	Front Office PM Portfolio Strategies	FO2PMPFS	20
107	Front Office Scripts and Formats	FO2PMSCF	20



Premium Pack

Individual Certifications

Code

Credits

108	Internet Banking Retail	T3IBR	40
109	Internet Banking Retail Functional	T3IBRF	20
110	Wealth Reporting	T3TWR	20
111	WealthSuite Overview	FO1WSOVE	20
112	Global Accounting Advanced Core 1	FSFGAAC1	20
113	Global Accounting Advanced Core 2	FSFGAAC2	20
114	Global Accounting Basics	FSFGAB	40
115	Global Accounting Data Mart and Investment Book Of Records (IBOR) Foundation	FSFGADM	20
116	Global Accounting Workflow and Exception Monitor (WEM)	FSFGAWEM	20
117	Global Investor Anti Dilution Levy (ADL)	FSFGIADL	20
118	Global Investor Anti-Money Laundering (AML)	FSFAML	20
119	Global Investor Contingent Deferred Sales Charge (CDSC)	FSFGICDSC	20
120	Global Investor Data Mart	FSFGIDM	20
121	Global Investor Foreign Account Tax Compliance Act (FATCA) and Common Reporting Standard (CRS)	FSFFATC	20

Individual Certifications

Code

Credits

122	Global Investor General Ledger	FSFGIGL	20
123	Global Investor Receipts	FSFGIRCPT	20
124	Global Investor Taxes	FSFGITAX	20
125	Identity and Access Management - Single Sign On	FSTISSO	20
126	Identity and Access Management - User Access Management	FSTIUAM	20
127	MFGA Migration Module	FSFGAMIG	20
128	Migration Tool	FSTMIG	20
129	Performance Engineering	FSTPERF	20
130	PLSQL Forms and Reports Best Practices	FSTPLS	20
131	Product Global Investor Basic	FSFGIB	20
132	SQL Technical	FSTSQL	20
133	WEM Technical	FSTWEM	20
134	Workflow and Exception Monitor (WEM) Pricing	FSFGIWEM	20
135	Business Analytics	T3TAB	20



Premium Pack

Individual Certifications

Code

Credits

136	Technical Analytics	T3TAT	40
137	TDH Temenos Data Engineering	T3TDE	40
138	Temenos Data Hub Overview	T3TDLO	20
139	Financial Crime Mitigation Business	T3FCM	40
140	Infinity Branch Banking	T3INBB	20
141	Infinity Essentials Functional	T3INESF	20
142	Infinity Essentials Technical	T3INEST	20
143	Infinity Retail Banking Functional	T3INRBF	20
144	UXP Temenos UXP	T3UXP	40
145	Temenos Implementation Methodology	T3TIM	40
146	Multifonds Technical Support Process	FSTISP	20

Individual Certifications

Code

Credits

147	Data Inbound Outbound Integrity and Access GI	FSTDATGI	20
148	Data Inbound Outbound Integrity and Access GA	FSTDATGA	20
149	Best Practices for BI Publisher	FSTBIP	20
150	Enhanced Accounting System	FSTAS	40
151	Best Practices for ADF Framework	FSTADF	20
152	TPH Business Functions	T3TBF	20
153	AA Safe Deposit Box	T3TAABX	20
154	Automation Basics	FSTAB	40
155	Market Risk Technical	FRMMRT	20
156	FRM PDLGD Functional	FRMPLF	20
157	FRM PDLGD Technical	FRMPLT	20
158	Market Risk Functional	FRMMRF	20



Transact Core Banking

Individual Certifications

Code

Credits

1	AA Based	T3ISAAT24	20
2	Arrangement Architecture Accounts	T3TAAR	40
3	Arrangement Architecture Agency Commission	T3TAAAG	20
4	Arrangement Architecture Deposits	T3TAAD	40
5	Arrangement Architecture Loans	T3TAAL	40
6	Arrangement Architecture Rewards	T3RW	20
7	Balance Netting	T3TBN	40
8	Business Events Management	T3TBE	20
9	Cash Pooling (Liquidity Management)	T3TPO	20
10	Channels - ARC Internet Banking	T3ARCIB	40
11	Channels - ARC Mobile Banking	T3ARCMB	40
12	Close Of Business Management	T3TCM	40
13	Collateral	T3TCO	40

Individual Certifications

Code

Credits

14	Collection	T3TCL	20
15	Common Reporting Standard	T3CRS	20
16	Connectors	T3TC	40
17	Core - Induction Business	T1ESL-2-B	20
18	Core - Induction Technical	T1ESL-1-T	20
19	Corporate Lending	T3TAACL	40
20	Customer Data Protection and Consent Management	T3TCDP	20
21	Derivatives	T3TDX	40
22	Event Framework - Inflow	T3FL	20
23	External BPM	T3BPM	20
24	Factoring and Forfaiting (Bills)	T3TBL	20
25	Fiduciary	T3TFD	20



Transact Core Banking

Individual Certifications

Code

Credits

26	Financial Inclusion Business	T3FIBU	20
27	Financial Inclusion Utilities	T3FIUT	20
28	Financial Reporting	T3TRE	40
29	Forex	T3TFX	40
30	Forward Rate Agreements	T3TFR	20
31	Front Office Asset Management	T3TAM	40
32	Front Office Delivery	T3DEL	40
33	Front Office Document Management	T3DM	20
34	Front Office Securities Administration and Trading - Advanced	T3TSCTA	40
35	Front Office Securities Administration and Trading - Basic	T3TSCTB	40
36	Inclusive Banking Suite Business	T3IBSBU	60
37	Inclusive Banking Suite Utilities	T3IBSUT	20

Individual Certifications

Code

Credits

38	Interaction Data Services	T3DSD	20
39	Interest Taxes and Charges	T3TIC	40
40	jBASE	T3JB	40
41	LD Based	T3ISLDT24	40
42	Letters of Credit (Trade Finance)	T3TLC	80
43	Loans and Deposits	T3TLD	40
44	Miscellaneous Deals	T3TMD	40
45	Money Market	T3TMM	40
46	Multi Company - Multi-Book	T3TMC	20
47	Mutual Funds	T3TMF	40
48	Past Dues	T3TPD	40
49	Position Management	T3TPM	20



Transact Core Banking

Individual Certifications

Code

Credits

Individual Certifications

Code

Credits

50	Process Workflow	T3PW	40
51	Relational Replication	T3RR	40
52	Repos	T3TRP	40
53	Retail Sweeping	T3TRS	20
54	Structured Products	T3TSY	40
55	Swaps	T3TSW	20
56	Syndicated Loans	T3TSL	40
57	Temenos Transact Packaging with Temenos Packager	T3TTP	20
58	tOP Enterprise Monitoring	T3tOP	20
59	Universal Performance Metrics	T3UPM	20
60	Arrangement Architecture Core	T3AAC	40
61	Arrangement Architecture Core - Technical	T3AACT	20

62	Data Migration	T3DMG	80
63	Multi-Tenancy	T3MT	20
64	Open Financial Service	T3OFS	40
65	Web Services	T3TWS	20
66	Administration	T3TAD	40
67	Customisation	T3CUS	80
68	Extensibility for Java	T3TECJ	20
69	Oracle Administration and Performance Tuning	T3ORA	40
70	Programming	T3PRG	80
71	Security Management System	T3SMS	40
72	TAFJ	T3TAFJ	40
73	TAFJ Integration Framework	T3TIF	20



Transact Core Banking

Individual Certifications

Code

Credits

Individual Certifications

Code

Credits

74	Temenos Open Connectivity Framework (TAFC)	T3TOCF(EF)	20
75	Upgrade	T3UPG	40
76	UXP Temenos UXP	T3UXP	40
77	Cheque and Draft Issue Management	T3TCI	20
78	Direct Debits	T3TDD	20
79	Funds Transfer	T3TFT	40
80	Payment Order Preliminary	T3TPI	40
81	Teller	T3TTT	40
82	Temenos Payments Basics	T3TPB	40

83	Temenos Payments Hub - Standalone System	T3STAL	20
84	Core - Customer Relationship Management	T3CRM	40
85	Core Accounts	T3TAC	40
86	Design Studio for Core Change Management	T3DST24	20
87	Financial Accounting	T3TFI	80
88	Limits	T3TLI	40
89	Securities Back Office - Advanced	T3TSCBA	40
90	Securities Back Office - Basic	T3TSCBB	40
91	Securities Back Office - Corporate Actions	T3TSCCA	40
92	Temenos Implementation Methodology	T3TIM	40



Infinity — Digital Front Office

Individual Certifications

Code

Credits

Individual Certifications

Code

Credits

1 Infinity Branch Banking T3INBB 20

2 Infinity Essentials Functional T3INESF 20

3 Infinity Essentials Technical T3INEST 20

4 Infinity Retail Banking Functional T3INRBF 20

5 UXP Temenos UXP T3UXP 40

6 Temenos Implementation Methodology T3TIM 40



Wealth Management

Individual Certifications

Code

Credits

Individual Certifications

Code

Credits

1 Core - Customer Relationship Management T3CRM 40

2 Core Accounts T3TAC 40

3 Design Studio for Core Change Management T3DST24 20

4 Financial Accounting T3TFI 80

5 Limits T3TLI 40

6 Securities Back Office - Advanced T3TSCBA 40

7 Securities Back Office - Basic T3TSCBB 40

8 Securities Back Office - Corporate Actions T3TSCCA 40

9 Channels Digital Engagement T3DE 40

10 Channels PM Advisory CH1PMADV 20



Wealth Management

Individual Certifications

Code

Credits

Individual Certifications

Code

Credits

11	Channels PM B2F	CH1PMB2F	20
12	Channels PM F2B	CH1PMF2B	20
13	Front Office PM Advanced Performance Analysis Attribution	FO2PMPAA	20
14	Front Office PM Advanced Performance Analysis Standard	FO2PMPAS	20
15	Front Office PM Constraints Management	FO2PMACM	20
16	Front Office PM Data Administration and Securities	FO2PMDAS	20
17	Front Office PM Operations and Positions	FO2PMOPP	20

18	Front Office PM Order Management	FO2PMOMT	20
19	Front Office PM Portfolio Strategies	FO2PMPFS	20
20	Front Office Scripts and Formats	FO2PMSCF	20
21	Internet Banking Retail	T3IBR	40
22	Internet Banking Retail Functional	T3IBRF	20
23	Wealth Reporting	T3TWR	20
24	WealthSuite Overview	FO1WSOVE	20
25	Temenos Implementation Methodology	T3TIM	40



Payments

Individual Certifications

Code

Credits

Individual Certifications

Code

Credits

1	Cheque and Draft Issue Management	T3TCI	20
---	-----------------------------------	-------	----

2	Direct Debits	T3TDD	20
---	---------------	-------	----



Payments

Individual Certifications

Code

Credits

Individual Certifications

Code

Credits

3 Funds Transfer T3TFT 40

4 Payment Order Preliminary T3TPI 40

5 Teller T3TTT 40

6 Temenos Payments Basics T3TPB 40

7 Temenos Payments Hub -
Standalone System T3STAL 20

8 Temenos Implementation
Methodology T3TIM 40



Fund Administration

Individual Certifications

Code

Credits

Individual Certifications

Code

Credits

1 Automation Basics FSTAB 40

2 Global Accounting Advanced
Core 1 FSFGAAC1 20

3 Global Accounting Advanced
Core 2 FSFGAAC2 20

4 Global Accounting Basics FSFGAB 40

5 Global Accounting Data Mart
and Investment Book Of
Records (IBOR) Foundation FSFGADM 20

6 Global Accounting Workflow
and Exception Monitor (WEM) FSFGAWEM 20

7 Global Investor Anti Dilution
Levy (ADL) FSFGIADL 20

8 Global Investor Anti-Money
Laundering (AML) FSFAML 20

9 Global Investor Contingent
Deferred Sales Charge (CDSC) FSFGICDSC 20

10 Global Investor Data Mart FSFGIDM 20



Fund Administration

Individual Certifications

Code

Credits

11	Global Investor Foreign Account Tax Compliance Act (FATCA) and Common Reporting Standard (CRS)	FSFFATC	20
12	Global Investor General Ledger	FSFGIGL	20
13	Global Investor Receipts	FSFGIRCPT	20
14	Global Investor Taxes	FSFGITAX	20
15	Identity and Access Management - Single Sign On	FSTISSO	20
16	Identity and Access Management - User Access Management	FSTIUAM	20
17	MFGA Migration Module	FSFGAMIG	20

Individual Certifications

Code

Credits

18	Migration Tool	FSTMIG	20
19	Performance Engineering	FSTPERF	20
20	PLSQL Forms and Reports Best Practices	FSTPLS	20
21	Product Global Investor Basic	FSFGIB	20
22	SQL Technical	FSTSQL	20
23	WEM Technical	FSTWEM	20
24	Workflow and Exception Monitor (WEM) Pricing	FSFGIWEM	20
25	Temenos Implementation Methodology	T3TIM	40



Analytics

Individual Certifications

Code

Credits

1	Business Analytics	T3TAB	20
---	--------------------	-------	----

Individual Certifications

Code

Credits

2	Technical Analytics	T3TAT	40
---	---------------------	-------	----



Analytics

Individual Certifications

Code

Credits

Individual Certifications

Code

Credits

3 TDH Temenos Data Engineering T3TDE 40

4 Temenos Data Hub Overview T3TDLO 20

5 Temenos Implementation Methodology T3TIM 40



Financial Crime Mitigation

Individual Certifications

Code

Credits

Individual Certifications

Code

Credits

1 Financial Crime Mitigation Business T3FCM 40

2 Temenos Implementation Methodology T3TIM 40



Transact Migration

Individual Certifications

Code

Credits

Individual Certifications

Code

Credits

1 Arrangement Architecture Core T3AAC 40

2 Arrangement Architecture T3AACT 20



Transact Migration

Individual Certifications

Code

Credits

Individual Certifications

Code

Credits

3	Core - Technical	T3DMG	80
4	Data Migration	T3MT	20
5	Multi-Tenancy	T3OFS	40
6	Open Financial Service	T3TWS	20
7	Web Services	T3TAD	40
8	Administration	T3CUS	80
9	Customisation	T3TECJ	20
10	Extensibility for Java	T3ORA	40

11	Oracle Administration and Performance Tuning	T3PRG	80
12	Programming	T3SMS	40
13	Security Management System	T3TAFJ	40
14	TAFJ	T3TIF	20
15	TAFJ Integration Framework	T3TOCF (EE)	20
16	Temenos Open Connectivity Framework (T AFC)	T3UPG	40
17	Upgrade	T3TIM	40
18	Temenos Implementation Methodology		



Transact Upgrade

Individual Certifications

Code

Credits

Individual Certifications

Code

Credits

1	Administration	T3TAD	40
---	----------------	-------	----

2	Customisation	T3CUS	80
---	---------------	-------	----



Transact Upgrade

Individual Certifications

Code

Credits

Individual Certifications

Code

Credits

3	Extensibility for Java	T3TECJ	20
---	------------------------	--------	----

4	Oracle Administration and Performance Tuning	T3ORA	40
---	--	-------	----

5	Programming	T3PRG	80
---	-------------	-------	----

6	Security Management System	T3SMS	40
---	----------------------------	-------	----

7	TAFJ	T3TAFJ	40
---	------	--------	----

8	TAFJ Integration Framework	T3TIF	20
---	----------------------------	-------	----

9	Temenos Open Connectivity Framework (TAFC)	T3TOCF (EE)	20
---	--	-------------	----

10	Upgrade	T3UPG	40
----	---------	-------	----

11	Temenos Implementation Methodology	T3TIM	40
----	------------------------------------	-------	----



Project Manager

Individual Certifications

Code

Credits

Individual Certifications

Code

Credits

1	Arrangement Architecture Deposits	T3TAAD	40
---	-----------------------------------	--------	----

2	Arrangement Architecture Loans	T3TAAL	40
---	--------------------------------	--------	----

3	WealthSuite Overview	FO1WSOVE	20
---	----------------------	----------	----

4	Global Accounting Basics	FSFGAB	40
---	--------------------------	--------	----

5	Temenos Implementation Methodology	T3TIM	40
---	------------------------------------	-------	----

TLC Online Premium Pack

Courses Available: 1000+



All of our specialist packs offer great value and allow our members to focus on the training that matters to them most.

However, many of our members still prefer to opt for our Premium membership. Premium membership still offers exceptional value, providing access to all of the training tools, materials, courses and exams contained in the packs already listed. It also provides access to other courses as yet unavailable through any of our other learning packs.

If you want the most versatile, unlimited and unrestricted access to Temenos Online training and certification we have to offer, then a TLC Premium Membership could be right for you.

Analytics

R22

- o Application Navigation
- o Application Pivot Reports
- o Introduction to Data Event Streaming (DES)
- o Product Introduction - Business
- o Product Introduction - Technical
- o Temenos Analytics Architecture Dataflow and Configuration
- o Temenos Data Engineering Architecture in Transact Data Hub
- o Transact Data Hub Data Lake Dataflow and Configuration
- o Transact Data Hub Installation on Azure
- o Transact Data Hub Overview

R21

- o Application Groups Data Relationship and Datasets
- o Application KPI Information Tiles and Dashboard
- o Application Navigation
- o Introduction to Data Event Streaming (DES)
- o Metadata Management System
- o Product Introduction - Business
- o Product Introduction - Business
- o Quick Reports
- o Temenos Analytics Architecture Dataflow and Configuration
- o Temenos Data Engineering and Navigation - Administrator

R20

- o Temenos Data Engineering and Navigation - Designer
- o Temenos Data Engineering and Navigation - Scheduler
- o Temenos Data Engineering Architecture in Transact Data Hub, Temenos Data Lake and Analytics
- o Transact Data Hub Data Lake Dataflow and Configuration
- o Transact Data Hub Temenos Data Lake and Temenos Analytics Overview
- o Application Groups Data Relationship and Datasets
- o Application KPI Information Tiles and Dashboard
- o Application Navigation
- o Application Pivot Reports
- o Introduction to Data Event Streaming (DES)
- o Metadata Management System
- o Product Introduction - Business
- o Quick Reports
- o Temenos Data Engineering and Navigation - Administrator
- o Temenos Data Engineering and Navigation - Deployer
- o Temenos Data Engineering and Navigation - Designer
- o Temenos Data Engineering and Navigation - Scheduler
- o Temenos Data Engineering

Architecture in Transact Data Hub, Temenos Data Lake and Analytics

- o Transact Data Hub Temenos Data Lake and Temenos Analytics Overview

R19

- o Application Data Manager
- o Application Groups Data Relationship and Datasets
- o Application Info Tiles and Dashboard Hub
- o Application KPI Dashboard
- o Application Navigation
- o Application Pivot Reports
- o Data ExStore and Reporting Platform
- o Development Tools and Local Configuration
- o Introduction to Temenos Data Engineering and Temenos Operational Data Store
- o Introduction to Temenos Data Lake
- o Predictive Analytics
- o Product Introduction - Business
- o Product Introduction - Technical
- o Quick Reports and Custom Reports
- o Temenos Data Engineering and Navigation - Administrator
- o Temenos Data Engineering and Navigation - Deployer
- o Temenos Data Engineering and Navigation - Designer
- o Temenos Data Engineering and Navigation - Scheduler

Core Banking

R21

- o AA Account Product Building Implementation Part 1
- o AA Account Product Building Implementation Part 2
- o AA Implementation Part 1
- o AA Implementation Part 2AA Lending Foundation Part 1
- o AA Lending Foundation Part 2
- o AA Relationship Pricing Implementation
- o AA Safe Deposit Box Implementation

- o AA Technical Overview
- o AC Accounts Foundation
- o AC Accounts Implementation Part 1
- o AC Accounts Implementation Part 2
- o Business Events Management
- o Cash Pooling Implementation
- o Cheque and Draft Management Foundation
- o Cloud Data Migration
- o Cloud Deployment
- o Collateral Foundation Part 1
- o Collateral Foundation Part 2
- o Collateral Foundation Part 3
- o Collateral Implementation
- o Collections Implementation
- o Confirmation Matching Implementation
- o Customer Foundation Part 1
- o Customer Foundation Part 2
- o Data Framework Relational Replication
- o Design Studio IRIS RIM Importer
- o Essentials Part 1
- o Essentials Part 2
- o Factoring and Forfeiting (Bills) Implementation
- o Financial Accounting and Reporting Foundation
- o Financial Accounting Implementation Part 1
- o Financial Accounting Implementation Part 2
- o Forward Rate Agreements Implementation (FRA)
- o Kubernetes on Google Cloud
- o Letters of Credit Implementation Part 1
- o Letters of Credit Implementation Part 2
- o Letters of Credit Implementation Part 3
- o Letters of Credit Implementation Part 4
- o Limits Foundation Part 1
- o Limits Foundation Part 2
- o Limits Foundation Part 3
- o Limits Implementation
- o Loans and Deposits
- o Microservices and Transact on AWS Cloud
- o Miscellaneous Deals

- Implementation Part 1
- o Miscellaneous Deals Implementation Part 2
- o Model Bank On Dockers
- o Money Market Part 1
- o Money Market Part 2
- o Nostro Reconciliation Implementation
- o Origination Architecture Basic Implementation
- o Past Dues Implementation
- o Position Management Implementation Part 1
- o Position Management Implementation Part 2
- o Post Closing Implementation
- o Securities Administration and Trading
- o Securities Foundation
- o Swaps Implementation Part 1
- o Swaps Implementation Part 2
- o Syndicated Loans Implementation
- o Temenos Cloud Induction
- o Treasury Front Office Implementation

R20

- o AA Account Product Building Implementation
- o AA Agent Commission Implementation
- o AA Common Building Blocks Implementation
- o AA Deposits Foundation Part 1
- o AA Deposits Foundation Part 2
- o AA Deposits Product Building Implementation
- o AA Implementation
- o AA Lending Foundation Part 1
- o AA Lending Foundation Part 2
- o AA Lending Product Building Implementation
- o AA Retail Accounts Foundation Part 1
- o AA Retail Accounts Foundation Part 2
- o AA Rewards Implementation
- o AA Technical Customisation
- o AA Technical Integration
- o AA Technical Overview
- o AA Technical Programming
- o AC Accounts Foundation
- o AC Accounts Implementation

- o Architecture Overview
- o Balance Netting Implementation
- o Cash Pooling Implementation
- o Cheque and Draft Management Foundation
- o Cheque and Draft Management Implementation
- o Close Of Business Management Foundation
- o Close Of Business Management Global Processing
- o Close Of Business Management Implementation
- o Collateral Foundation Part 1
- o Collateral Foundation Part 2
- o Collateral Implementation
- o Collections Implementation
- o Common Reporting Standards Implementation
- o Consent Management Implementation
- o Corporate Actions
- o Corporate Lending Implementation
- o Customer Data Protection Implementation
- o Data Event Streaming (DES)
- o Derivatives Administration
- o Derivatives Trading and Management
- o Design Studio Advanced Adaptation
- o Design Studio Data Eson Designer
- o Design Studio DSF Rules Designer
- o Design Studio Enquiry Designer
- o Design Studio Foundation
- o Design Studio Integration Framework Designer
- o Design Studio IRIS Foundation
- o Design Studio IRIS Published API
- o Design Studio IRIS Security
- o Design Studio Process Workflow Designer
- o Design Studio Screen Designer
- o Design Studio Temenos Workbench Foundation
- o Essentials
- o Extensibility for Java
- o Financial Accounting and Reporting Foundation
- o Financial Accounting Implementation
- o Financial Reporting

- Implementation
- o IIB Custom Adapter
- o Integration Framework Inflow Foundation
- o Integration Framework Inflow Implementation
- o Integration Framework Inflow PW Implementation
- o Integration Framework Overview
- o Interest, Taxes and Charges Foundation
- o Interest, Taxes and Charges Implementation
- o Letters of Credit Implementation
- o Limits Foundation Part 1
- o Limits Foundation Part 2
- o Limits Implementation
- o Local Clearing Implementation
- o Microservices Advanced Concepts Implementation
- o Microservices Foundation
- o Miscellaneous Deals Implementation
- o Multi-Company - Multi-Book
- o Programming Foundation
- o Programming Routines
- o Programming Templates
- o Provisioning Implementation
- o Retail Sweeping Implementation
- o Securities Administration
- o Securities Administration and Trading
- o Securities Back Office Foundation
- o Securities Back Office Implementation
- o Securities Foundation
- o Settlements on Derivatives
- o Settlements on Securities
- o System Management
- o T24 Securities Trading and Management
- o TAFC-TAFJ Migration
- o TAFJ Foundation
- o TAFJ Implementation
- o Technical Concepts
- o Temenos eXplainable Artificial Intelligence (XAI)
- o Updates and Upgrade
- o AA Account Product Building Implementation
- o AA Agent Commission Implementation
- o AA Common Building Blocks Implementation
- o AA Deposits Foundation Part 1
- o AA Deposits Foundation Part 2
- o AA Deposits Product Building Implementation
- o AA External Product Implementation
- o AA Implementation
- o AA Lending Foundation Part 1
- o AA Lending Foundation Part 2
- o AA Lending Product Building Implementation
- o AA Retail Accounts Foundation Part 1
- o AA Retail Accounts Foundation Part 2
- o AA Rewards Implementation
- o AA Safe Deposit Box Implementation
- o AC Accounts Foundation
- o Administration
- o Balance Netting Implementation
- o Browser Navigation
- o Cheque and Draft Management Implementation
- o Close Of Business Management
- o Collateral Foundation Part 1
- o Collateral Foundation Part 2
- o Collateral Implementation
- o Common Reporting Standards Implementation
- o Confirmation Matching Implementation
- o Consent Management Implementation
- o Customer Data Protection Implementation
- o Customer Foundation Part 1
- o Customisation
- o Data Framework Relational Replication
- o Data Life Cycle Management
- o Design Studio Advanced Adaptation
- o Design Studio Data Eson Designer
- o Design Studio Enquiry Designer
- o Design Studio Foundation
- o Design Studio Integration Framework Designer
- o Design Studio IRIS Event Processing
- o Design Studio IRIS Foundation

R19

- o Design Studio IRIS Publishing API
- o Design Studio IRIS RIM Importer
- o Design Studio IRIS Security
- o Design Studio Process Workflow Designer
- o Design Studio SCM Integration
- o Design Studio Screen Designer
- o Design Studio T24 Extensibility for Java
- o Essentials
- o Factoring and Forfaiting (Bills) Implementation
- o Financial Accounting and Reporting Foundation
- o Financial Accounting Implementation
- o Financial Reporting Implementation
- o FO Customer Relationship Manager
- o Forex
- o Forward Rate Agreements Implementation (FRA)
- o IBS Technical Utilities
- o IIB Custom Adapter
- o Integration Framework Runtime
- o Interest, Taxes and Charges Foundation
- o Interest, Taxes and Charges Implementation
- o Letters of Credit Implementation
- o Limits Foundation Part 1
- o Limits Foundation Part 2
- o Loans and Deposits
- o Local Clearing Implementation
- o Miscellaneous Deals Implementation
- o Money Market
- o Mule Adapter
- o Multi-Company - Multi-Book
- o Nostro Reconciliation Implementation
- o Open Financial Service
- o Origination Architecture Basic Implementation
- o Packaging and Deployment Utilities
- o Past Dues Implementation
- o Position Management Implementation
- o Post Closing Implementation
- o Programming Foundation
- o Programming Routines

- o Programming Templates
- o Provisioning Implementation
- o Security Management System
- o Swaps Implementation
- o Syndicated Loans Implementation
- o TAFJ (Temenos Application Framework Java)
- o Technical Concepts
- o Transaction Cyclor Implementation
- o Treasury Front Office Implementation
- o Updates and Upgrade
- o Web Services

Delta

R22

- o Fund Administration and Wealth Management New Features
- o Infinity UXP and TCD New Features
- o Payment and Financial Crime New Features
- o SaaS XAI FRM Data and Analytics New Features
- o Transact Functional New Features
- o Transact Technical New Features

Financial Crime

R21

- o AML Transaction Monitoring (Profile)
- o Configuration Functional Implementation
- o Customer Sanctions and Watch Lists (Screen)
- o Financial Crime (FCM) Overview
- o Financial Crime (FCM) Technical Foundation Advanced
- o Knowledge Manager Functional Implementation
- o KYC Customer Risk Assessment (KC+)
- o Payment Fraud Monitoring (SAP)
- o SaaS 2.0 FCM on Azure
- o Security Functional Implementation
- o Transaction Sanctions Filtering (Screen)

R20

- o Financial Crime (FCM) Functional Foundation
- o Financial Crime (FCM) Functional Implementation
- o Financial Crime (FCM) Technical Foundation
- o Financial Crime (FCM) Technical Foundation Advanced

R19

- o Financial Crime (FCM) Functional Foundation
- o Financial Crime (FCM) Functional Implementation

Financial Inclusion

R21

- o Foundation

Fund Admin

R22

- o Accounting Engine
- o Classification Engine
- o Exchange Traded Funds
- o Global Accounting Australian Taxes
- o Global Accounting Bank Debt
- o Global Accounting Data Mart and Investment Book Of Records (IBOR) Foundation
- o Global Accounting Derivatives
- o Global Accounting Equalisation
- o Global Accounting Foundation
- o Global Accounting Fund Pricing
- o Global Accounting Fund Structure
- o Global Accounting Implementation Part 1
- o Global Accounting Implementation Part 2
- o Global Accounting Valuation Method
- o Global Accounting Workflow and Exception Monitor (WEM)
- o Global Investor Anti Dilution Levy (ADL)
- o Global Investor Anti-Money Laundering (AML) Foundation
- o Global Investor Contingent Deferred Sales Charge (CDSC)

R21

- o Global Investor Data Mart Foundation
- o Global Investor Foreign Account Tax Compliance Act (FATCA) and Common Reporting Standard (CRS) Foundation
- o Global Investor Foundation
- o Global Investor General Ledger
- o Global Investor National Securities Clearing Corporation (NSCC)
- o Global Investor Payments
- o Global Investor Receipts
- o Global Investor Swift
- o Global Investor Tax
- o Global Investor Workflow and Exception Monitor (WEM)
- o Migration Module
- o Technical Performance Tuning for Global Accounting
- o Technical Single Sign On (SSO)
- o Workflow and Exception Monitor (WEM) Technical
- o Accounting Engine
- o Classification Engine
- o Exchange Traded Funds
- o Global Accounting Australian Taxes
- o Global Accounting Bank Debt
- o Global Accounting Derivatives
- o Global Accounting Equalisation
- o Global Accounting Foundation
- o Global Accounting Fund Pricing
- o Global Accounting Fund Structure
- o Global Accounting Implementation Part 1
- o Global Accounting Implementation Part 2
- o Global Accounting Valuation Method
- o Global Accounting Workflow and Exception Monitor (WEM)
- o Global Investor Anti Dilution Levy (ADL)
- o Global Investor Anti-Money Laundering (AML) Foundation
- o Global Investor Contingent Deferred Sales Charge (CDSC)
- o Global Investor Data Mart Foundation
- o Global Investor Foreign Account

- Tax Compliance Act (FATCA) and Common Reporting Standard (CRS) Foundation
- o Global Investor Foundation
- o Global Investor General Ledger
- o Global Investor National Securities Clearing Corporation (NSCC)
- o Global Investor Payments
- o Global Investor Receipts
- o Global Investor Swift
- o Global Investor Tax
- o Global Investor Workflow and Exception Monitor (WEM)
- o Migration Module
- o Technical Performance Tuning for Global Accounting
- o Technical Single Sign On (SSO)
- o Workflow and Exception Monitor (WEM) Technical

R20

- o Data Segregation and Data Masking
- o Global Accounting Data Mart and Investment Book Of Records (IBOR) Foundation
- o Global Accounting Derivatives
- o Global Accounting Equalisation
- o Global Accounting Foundation
- o Global Accounting Fund Pricing
- o Global Accounting Fund Structure
- o Global Accounting Implementation
- o Global Accounting Valuation Method
- o Global Accounting Workflow and Exception Monitor (WEM)
- o Global Investor Anti Dilution Levy (ADL)
- o Global Investor Anti-Money Laundering (AML) Foundation
- o Global Investor Contingent Deferred Sales Charge (CDSC)
- o Global Investor Data Mart Foundation
- o Global Investor Foreign Account Tax Compliance Act (FATCA) and Common Reporting Standard (CRS) Foundation
- o Global Investor Foundation
- o Global Investor General Ledger
- o Global Investor Receipts
- o Global Investor Tax
- o Global Investor Workflow and

Exception Monitor (WEM)

- o SQL Technical
- o Technical Data Mart for Global Accounting
- o Technical Data Mart for Global Investor
- o Technical Single Sign On (SSO)
- o Workflow and Exception Monitor (WEM) Technical

R19

- o Anti Dilution Levy (ADL) Points
- o Automation Framework
- o Coding Standards
- o Contingent Deferred Sales Charge (CDSC)
- o Data Mart in Multifonds Global Accounting (MFGA)
- o Data Mart in Multifonds Global Investor (MFGI)
- o Data Segregation and Data Masking
- o Financial Market Basics
- o General Ledger
- o Guideline for SUP Database
- o Induction Basic Multifonds Global Accounting (MFGA)
- o Induction Basic Multifonds Global Investor (MFGI)
- o Oracle Test Manager (OTM) and Oracle Functional Testing (OFT)
- o Receipts
- o Single Sign On (SSO) Architecture and Workflow
- o SQL
- o SQL and PL SQL Best Practices
- o SVN
- o Taxes
- o Technical Support Basics Introduction
- o Temenos Multifonds University (TMFU) Workflow and Exception Monitor (WEM)
- o Users Screen

Infinity

R22

- o Components Implementation
- o Corporate Origination Foundation
- o Digital Banking Apps Extensibility Advanced
- o Digital Banking Apps Technical Foundation Part 2

- o Engage
- o Essentials
- o Retail Origination Foundation
- o SaaS Microservices Implementation on Azure
- o Salesforce Integration
- o UXP Foundation Essentials with Hybrid Apps

R21

- o Components Implementation
- o Corporate Origination Foundation
- o Delta Training 9.0
- o Developer Bootcamp with Visualizer and Fabric 9.0
- o Developer Bootcamp with Visualizer and Fabric 9.0 Delta
- o Engage
- o Essentials
- o Essentials - Technical Part 1
- o Essentials - Technical Part 2
- o Essentials - Technical Part 3
- o Installation
- o Journey Analytics Foundation
- o Journey Maestro Form Builders
- o Journey Manager for Platform Developers
- o Journey Manager Operation Cloud
- o Journey Manager Operation On Premises
- o Journey Manager Platform Overview
- o Journey Platform Architecture
- o Journey Platform Architecture
- o Microservices Implementation
- o Origination Foundation
- o Origination Technical Foundation
- o Quantum Platform Overview
- o Quantum Testing Framework Foundation
- o Retail Banking Apps Foundation
- o SaaS Microservices Implementation on Azure
- o Small and Medium Enterprise (SME) Banking Part 1
- o Small and Medium Enterprise (SME) Banking Part 2
- o Spotlight
- o Upgrade
- o UXP Advanced Essentials
- o UXP Application Installation
- o UXP Enterprise Platform
- o UXP Enterprise Team
- o UXP Foundation Devices

- o UXP Foundation Essentials with Hybrid Apps
- o UXP Foundation Live CMS
- o UXP Foundation Tables and Charts
- o UXP Foundation Temenos Theme
- o Wealth App Foundation

R20

- o Customer Onboarding Foundation
- o Delta Training 8.2
- o Delta Training 8.3
- o Delta Training 8.4
- o Developer Bootcamp with Visualizer and Fabric 8.0
- o Engage
- o Essentials
- o Essentials - Technical
- o Installation
- o Retail Banking Apps Extensibility
- o Retail Banking Apps Extensibility Advanced
- o Retail Banking Apps Foundation
- o Retail Banking Apps Technical Foundation
- o Small and Medium Enterprise (SME) Banking
- o Spotlight
- o Upgrade

R19

- o Journey Analytics Foundation
- o Journey Maestro Form Builders
- o Journey Manager for Platform Developers
- o Journey Manager Operation On Premises
- o Journey Manager Platform Overview
- o Journey Platform Architecture
- o Journey Platform Operation Cloud
- o Microservices

Islamic Banking

R22

- o Islamic Banking Concepts
- o Islamic Finance Diminishing Musharaka Implementation
- o Islamic Finance Ijara Implementation
- o Islamic Finance Murabaha Implementation
- o Islamic Finance Qard Hasan

- Implementation
- o Islamic Finance Wakala Musawama Implementation

R21

- o Islamic Banking Concepts
- o Islamic Finance Bai Salam Implementation
- o Islamic Finance Commodity Murabaha Implementation
- o Islamic Finance Diminishing Musharaka Implementation
- o Islamic Finance Ijara Implementation
- o Islamic Finance Murabaha Implementation
- o Islamic Finance Qard Hasan Implementation
- o Islamic Finance Wakala Musawama Implementation
- o Islamic Finance Workflow
- o Profit Distribution System Implementation

R20

- o Profit Distribution System Implementation

R19

- o Islamic Banking Concepts
- o Islamic Finance Bai Salam Implementation
- o Islamic Finance Commodity Murabaha Implementation
- o Islamic Finance Diminishing Musharaka Implementation
- o Islamic Finance Ijara Implementation
- o Islamic Finance Murabaha Implementation
- o Islamic Finance Qard Hasan Implementation
- o Islamic Finance Wakala Musawama Implementation
- o Islamic Finance Workflow
- o Profit Distribution System Implementation

Payment

R22

- o Cheque Collection Implementation
- o Expected Receipts Implementation

- o Funds Transfer
- o Initiation Foundation
- o Initiation Implementation Part 1
- o Payment Hub Foundation Part 1
- o Payment Hub Foundation Part 2
- o Payment Hub Implementation Part 1
- o Payment Hub Implementation Part 2

R21

- o Cheque Collection Implementation
- o Clearing Framework - Part 1
- o Clearing Framework - Part 2
- o Clearing Implementation
- o Expected Receipts Implementation
- o Funds Transfer
- o Initiation Foundation
- o Initiation Foundation
- o Initiation Implementation
- o Instant Payments Implementation Part 1
- o Instant Payments Implementation Part 2
- o International Cross Border Payments
- o Payment Hub Foundation Part 1
- o Payment Hub Foundation Part 2
- o Payment Hub Implementation Part 1
- o Payment Hub Implementation Part 2
- o Repair Designer Part 1
- o Repair Designer Part 2
- o Sanction Screening
- o Standalone Payment Hub - Part 1
- o Standalone Payment Hub - Part 2
- o SWIFT GPI
- o TARGET Instant Payments Settlement (TIPS) Payment Service
- o TARGET2 MX Implementation

R20

- o Clearing Framework
- o Clearing Implementation
- o Direct Debits
- o Expected Receipts Implementation
- o Funds Transfer
- o Initiation Foundation
- o Instant Payments Implementation

- o Payment Hub Foundation Part 1
- o Payment Hub Foundation Part 2
- o Payment Hub Implementation
- o Payment Initiation Implementation
- o Repair Designer
- o Standalone Payment Hub
- o SWIFT GPI

R19

- o Cheque Collection
- o Clearing Framework
- o Clearing Implementation
- o Direct Debits
- o Expected Receipts Implementation
- o Funds Transfer
- o Instant Payments Implementation
- o Payment Hub Implementation
- o Payment Initiation Implementation
- o Standalone Payment Hub
- o Teller Foundation Part 1
- o Teller Foundation Part 2
- o Teller Implementation

Project Manager

R21

- o Analytics Product Introduction - Business
- o Core Banking AC Accounts Foundation
- o Core Banking Customer Foundation Part 1
- o Core Banking Financial Accounting and Reporting Foundation
- o Core Banking Limits Foundation Part 1
- o Infinity Essentials
- o Payment Payment Hub Foundation Part 1
- o Temenos Products Induction
- o Transact Browser Navigation

R20

- o Analytics Product Introduction - Business
- o Core Banking AA Deposits Foundation Part 1
- o Core Banking AA Lending Foundation Part 1
- o Core Banking AA Retail Accounts Foundation Part 1

- o Core Banking AC Accounts Foundation
- o Core Banking Financial Accounting and Reporting Foundation
- o Core Banking Limits Foundation Part 1
- o Fund Admin Global Accounting Foundation
- o Infinity Essentials
- o Payment Payment Hub Foundation Part 1
- o Temenos Products Induction
- o Temenos Technologies Induction
- o Wealth Management WealthSuite Overview

R19

- o Analytics Product Introduction - Business
- o Core Banking AA Deposits Foundation Part 1
- o Core Banking AA Lending Foundation Part 1
- o Core Banking AA Retail Accounts Foundation Part 1
- o Core Banking AC Accounts Foundation
- o Core Banking Browser Navigation
- o Core Banking Customer Foundation Part 1
- o Core Banking Financial Accounting and Reporting Foundation
- o Core Banking Limits Foundation Part 1

Regional Banking

R21

- o UKMB BBSI Reporting
- o UKMB Financial Services Compensation Scheme (FSCS)
- o UKMB FSCS Continuity of Access
- o UKMB Return Direct Credit
- o UKMB Static Data

R20

- o USMB Demo Session Kickoff

Risk and Compliance

R22

- o FATCA Withholding Implementation
- o Financial Risk Management Foundation
- o Financial Risk Management Web application Navigation and Models Configuration
- o Market Risk
- o Qualified Intermediary Implementation
- o Technical Risk

R21

- o Contagion Process Implementation
- o Customer Data Protection Implementation
- o FATCA Client Identification Implementation
- o FATCA Reporting Implementation
- o FATCA Withholding Implementation
- o IFRS (International Financial Reporting Standards) Implementation
- o Obligor Objects Implementation
- o Qualified Intermediary Implementation

R20

- o FATCA Client Identification Implementation
- o FATCA Client Identification Implementation
- o FATCA Reporting Implementation
- o FATCA Withholding Implementation
- o IFRS (International Financial Reporting Standards) Implementation

R19

- o FATCA Client Identification Implementation
- o FATCA Client Identification Implementation
- o FATCA Reporting Implementation
- o FATCA Withholding Implementation
- o IFRS (International Financial Reporting Standards)

Implementation

Temenos

R22

- o Implementation Methodology - Infinity
- o Implementation Methodology - Transact
- o Implementation Methodology - Wealth
- o Project Delivery - Basics
- o Project Delivery - Commercial Basics
- o Project Delivery - Implementation Methodologies
- o Project Delivery - Partner Engagement Models
- o Project Delivery - SaaS Governance
- o Technologies Induction

R21

- o Implementation Methodology - Infinity
- o Implementation Methodology - Transact
- o Products Induction

R20

- o Products Induction
- o Technologies Induction

TLC

R22

- o Engine Functionality
- o Process Led Workshop

R21

- o Engine Functionality
- o Engine Simulation Screen Capture
- o Engine User Licenses
- o Fund Administration and Wealth Management Delta Q2-2021
- o Fund Administration and Wealth Management Delta Q3-2021
- o Fund Administration and Wealth Management Delta Q4-2021
- o Infinity Analytics Datalake UXP and XAI Delta Q2-2021
- o Infinity UXP and TCD Delta Q1-

- 2022
- o Payment Financial Crime and SaaS Delta Q2-2021
- o Payments and Financial Crime Delta Q3-2021
- o SaaS XAI Data and Analytics and FRM Delta Q3-2021
- o Transact Development And Operations Delta Q1-2022
- o Transact Development And Operations Delta Q2-2021
- o Transact Development And Operations Delta Q3-2021
- o Transact Development And Operations Delta Q4-2021
- o Transact Functional 1 Delta Q2-2021
- o Transact Functional 1 Delta Q4-2021
- o Transact Functional 2 Delta Q2-2021
- o Transact Functional 2 Delta Q3-2021

- o Engine

R20

Transact

R23

- o Design Studio Screen Designer
- o Integration Framework Inflow PW Implementation

R22

- o AA Agent Commission Implementation
- o AA Deposits Foundation Part 1
- o AA Deposits Foundation Part 2
- o AA External Product Implementation
- o AA Lending Foundation Part 2
- o AA Retail Accounts Foundation Part 1
- o AA Retail Accounts Foundation Part 2
- o AA Rewards Implementation
- o AA Safe Deposit Box Implementation
- o AA Technical Customisation
- o AA Technical Integration
- o AC Accounts Foundation

- o AC Accounts Implementation Part 1
- o AC Accounts Implementation Part 2
- o Administration Implementation
- o API Framework Foundation
- o Architecture Overview
- o Browser Navigation
- o Cash Pooling Implementation
- o Cheque and Draft Management Foundation
- o Close Of Business Management Implementation Part 1
- o Collateral Foundation Part 1
- o Collateral Foundation Part 2
- o Collateral Implementation
- o Corporate Lending Implementation Part 2
- o Customer Foundation Part 1
- o Customer Foundation Part 2
- o Data Event Streaming (DES)
- o Design Studio Data Eson Designer
- o Design Studio Screen Designer
- o Essentials Part 1
- o Extensibility Essentials
- o External BPM
- o Fiduciaries
- o Financial Accounting and Reporting Foundation
- o Financial Accounting Implementation Part 1
- o Financial Accounting Implementation Part 2
- o Integration Framework Inflow PW Implementation
- o Integration Framework Overview
- o Interaction Data Services Part 1
- o Interaction Data Services Part 2
- o Interest Taxes and Charges Foundation
- o ISO20022 Account Statement (CAMT) Implementation
- o Letters of Credit Implementation Part 1
- o Letters of Credit Implementation Part 2
- o Letters of Credit Implementation Part 2
- o LIBOR Transition to Risk Free Rates Implementation Part 1
- o Limits Foundation Part 1
- o Limits Foundation Part 3
- o Limits Implementation

- o Local Clearing Implementation
- o Microservices Foundation
- o Miscellaneous Deals Implementation Part 1
- o Miscellaneous Deals Implementation Part 2
- o Money Market Part 1
- o Money Market Part 2
- o Multi-Company - Multi-Book Implementation
- o Multi-Currency Accounts Implementation
- o Multi-Tenancy
- o Nostro Reconciliation Implementation
- o Open Financial Service Advanced
- o Open Financial Service Foundation
- o Position Management Implementation Part 1
- o Position Management Implementation Part 2
- o Post Closing Implementation
- o Process Workflow Advanced
- o Process Workflow Advanced
- o Process Workflow Foundation
- o Programming Components
- o Programming Foundation
- o PSD2 Account Information Implementation
- o Repos
- o SaaS Composable Banking Essentials
- o Swaps Implementation Part 1
- o TAFJ Implementation
- o TBS Global Service Lending Fulfillment Service Overview
- o Technical Concepts
- o Technical Essentials
- o Teller Foundation Part 2
- o Teller Implementation
- o Temenos Advanced Collection (TAC) Functional
- o Temenos eXplainable Artificial Intelligence (XAI) Part 1
- o Temenos Open Connectivity Framework Part 1
- o Temenos Open Connectivity Framework Part 2
- o Temenos Packager Foundation
- o Temenos Security Authorisation Foundation
- o Temenos Transact Overview

R21

- o Transaction Cyclor Implementation
- o Web Services
- o Workbench Advanced
- o Workbench Extensibility
- o Workbench Foundation
- o Workbench Installation
- o AA Agent Commission Implementation
- o AA Common Building Blocks Implementation Part 1
- o AA Common Building Blocks Implementation Part 2
- o AA Deposits Foundation Part 1
- o AA Deposits Foundation Part 2
- o AA Deposits Product Building Implementation
- o AA External Product Implementation
- o AA Lending Product Building Implementation
- o AA Lending Product Building Implementation
- o AA Retail Accounts Foundation Part 1
- o AA Retail Accounts Foundation Part 2
- o AA Rewards Implementation
- o AA Technical Customisation
- o AA Technical Integration
- o AA Technical Programming
- o API Framework Foundation
- o API Framework Published API
- o API Framework Security
- o Architecture Overview
- o Balance Netting Implementation
- o Browser Navigation
- o Cheque and Draft Management Implementation
- o Close Of Business Management Foundation
- o Close Of Business Management Global Processing
- o Close Of Business Management Implementation Part 1
- o Close Of Business Management Implementation Part 2
- o Common Reporting Standards Implementation
- o Corporate Actions
- o Corporate Lending Implementation Part 1

- o Corporate Lending Implementation Part 2
- o Data Event Streaming (DES)
- o Data Life Cycle Management
- o Design Studio DSF Rules Designer
- o Design Studio Enquiry Designer
- o Design Studio Enquiry Designer
- o Design Studio Foundation
- o Design Studio Process Workflow Designer
- o Design Studio Screen Designer
- o Design Studio Screen Designer
- o DSF Packager Advanced
- o DSF Packager Foundation
- o Event Framework Designer
- o Event Framework Runtime
- o Extensibility for Java
- o Financial Inclusion Foundation
- o Financial Reporting Implementation
- o FO Asset Management
- o FO Customer Relationship Manager
- o FO Delivery
- o FO Document Management
- o Forex
- o IIB Custom Adapter
- o Installation
- o Integration Framework Inflow PW Implementation
- o Integration Framework Overview
- o Interest Taxes and Charges Foundation
- o Interest Taxes and Charges Implementation
- o Kubernetes on Azure Cloud
- o LIBOR Transition to Risk Free Rates Implementation Part 1
- o LIBOR Transition to Risk Free Rates Implementation Part 2
- o Local Clearing Implementation
- o Microservices Foundation
- o Microservices Integration
- o Mule Adapter
- o Multi-Company - Multi-Book Implementation
- o Open Financial Service Advanced
- o Open Financial Service Foundation
- o Performance and Tuning
- o Programming Components
- o Programming Foundation
- o Programming Routines
- o Programming Templates
- o Provisioning Implementation
- o PSD2 Account Information Implementation
- o PSD2 Payments Implementation
- o Retail Sweeping Implementation
- o SaaS 2.0 Essentials
- o SaaS 2.0 Security
- o SaaS 2.1 Automated Test Framework Scripting
- o SaaS 2.1 Extensibility Essentials
- o SaaS Temenos Continuous Deployment - Administrator
- o SaaS Temenos Continuous Deployment - Developer
- o SaaS Temenos Continuous Deployment - Tester
- o Securities Administration
- o Securities Back Office Foundation
- o Securities Back Office Implementation
- o Securities Trading and Management
- o Security Management System
- o Settlements on Securities
- o Syndicated Loans Implementation
- o TAFC-TAFJ Migration
- o TAFJ Foundation
- o TAFJ Implementation
- o Technical Concepts
- o Technical Essentials
- o Teller Foundation Part 1
- o Teller Foundation Part 2
- o Temenos Advanced Collection (TAC)
- o Temenos Security Authorisation Foundation
- o Transaction Cyclor Implementation
- o Web Services
- o Workbench Advanced
- o Workbench Foundation
- o Workbench Installation
- o Design Studio DSF Packager

R20

Wealth Management

R22

- o CH CRM Client and Contact Management
- o CH PM Foundation and Navigation
- o FO PM Advanced Constraint Management
- o FO PM Data Administration and Security Overview
- o FO PM Design Studio Administration
- o FO PM Design Studio Foundation
- o FO PM Design Studio Odata API
- o FO PM Design Studio WUI Adaptation
- o FO PM Design Studio WUI Processes
- o FO PM Instrument Templates Orders
- o FO PM Managed Accounts
- o FO PM Monitoring and Performance
- o FO PM System Management
- o WealthSuite Overview
- o WealthSuite Overview
- o WS TTI Cash and Securities
- o WS TTI Client and Portfolio
- o WS TTI Foundation
- o WS TTI Functional Concepts
- o WS TTI Order Management

R21

- o CH IB Retail Essentials for Administration
- o CH IB Retail Essentials for Business
- o CH PM Advisory
- o CH PM Analysis
- o CH PM Foundation and Navigation
- o CH PM Installation
- o CH PM Order Initiation and Processing
- o CH PM Orders and Transfers
- o CH Real Time Engagement (Digital Engagement)
- o Datasource Architecture
- o Datasource Installation
- o FO PM Advanced Constraint Management
- o FO PM Advanced Performance Analysis - Attribution

R20

- o FO PM Advanced Performance Analysis - Standard
 - o FO PM Architecture
 - o FO PM Data Administration and Security Overview
 - o FO PM Design Studio Administration
 - o FO PM Design Studio Foundation
 - o FO PM Design Studio Odata API
 - o FO PM Design Studio WUI Adaptation
 - o FO PM Design Studio WUI Processes
 - o FO PM Installation (NuoDB)
 - o FO PM Installation (Oracle)
 - o FO PM Installation (Sybase)
 - o FO PM Instrument Templates Orders
 - o FO PM IPO Subscription
 - o FO PM Managed Accounts
 - o FO PM Monitoring and Performance
 - o FO PM Operations and Positions
 - o FO PM Order Management
 - o FO PM Portfolio Strategies
 - o FO PM Questionnaire
 - o FO PM Scripts and Formats
 - o FO PM System Management
 - o FO PM TSL Administration
 - o FO Web Admin Console
 - o WealthSuite Overview
 - o WS TTI Architecture
 - o WS TTI Cash and Securities
 - o WS TTI Client and Portfolio
 - o WS TTI Derivatives
 - o WS TTI Foundation
 - o WS TTI Functional Concepts
 - o WS TTI Order Management
- o CH CRM Client and Contact Management
 - o CH PM Advisory
 - o CH PM B2F
 - o CH PM F2B
 - o Datasource Architecture
 - o FO PM Advanced Performance Analysis - Attribution
 - o FO PM Advanced Performance Analysis - Standard
 - o FO PM Advisory
 - o FO PM B2F
 - o FO PM Data Administration and Security Overview

- o FO PM F2B
- o FO PM Operations and Positions
- o FO PM Portfolio Strategies
- o FO PM Questionnaire
- o FO PM Scripts and Formats
- o FO PM Tax Lots Management
- o WealthSuite Overview

R19

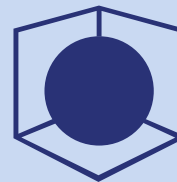
- o CH PM Adaptation
- o CH PM B2F
- o Datasource Architecture
- o Datasource Installation
- o FO PM Advanced Constraint Management
- o FO PM Advanced Performance Analysis - Attribution
- o FO PM Advanced Performance Analysis - Standard

- o FO PM Design Studio Administration
- o FO PM Design Studio Foundation
- o FO PM Design Studio WUI Adaptation
- o FO PM Design Studio WUI Processes
- o FO PM IPO Subscription
- o FO PM Operations and Positions
- o FO PM Order Management
- o FO PM Portfolio Strategies
- o FO PM Questionnaire
- o FO PM Reporting Adaptation
- o FO PM Reporting Foundation
- o FO PM Scripts and Formats
- o WS TTI Foundation

Annual Cost \$2,000.00

Transact Core Banking

Courses Available: 588



R23

- o Design Studio Screen Designer
- o Integration Framework Inflow PW Implementation

R22

- o AA Agent Commission Implementation
- o AA Deposits Foundation Part 1
- o AA Deposits Foundation Part 2
- o AA External Product Implementation
- o AA Lending Foundation Part 2
- o AA Retail Accounts Foundation Part 1
- o AA Retail Accounts Foundation Part 2
- o AA Rewards Implementation
- o AA Safe Deposit Box Implementation
- o AA Technical Customisation
- o AA Technical Integration
- o AC Accounts Foundation
- o AC Accounts Implementation Part 1
- o AC Accounts Implementation Part 2
- o Administration Implementation
- o API Framework Foundation
- o Architecture Overview
- o Browser Navigation
- o Cash Pooling Implementation
- o Cheque and Draft Management Foundation
- o Cheque Collection Implementation
- o Close Of Business Management Implementation Part 1
- o Collateral Foundation Part 1
- o Collateral Foundation Part 2
- o Collateral Implementation
- o Corporate Lending Implementation Part 2
- o Customer Foundation Part 1
- o Customer Foundation Part 2
- o Data Event Streaming (DES)
- o Design Studio Data Eson Designer

- o Design Studio Screen Designer
- o Engine Functionality
- o Essentials Part 1
- o Expected Receipts Implementation
- o Extensibility Essentials
- o External BPM
- o Fiduciaries
- o Financial Accounting and Reporting Foundation
- o Financial Accounting Implementation Part 1
- o Financial Accounting Implementation Part 2
- o Financial Risk Management Foundation
- o Funds Transfer
- o Implementation Methodology - Transact
- o Infinity UXP and TCD New Features
- o Infinity UXP and TCD New Features
- o Infinity UXP and TCD New Features
- o Initiation Foundation
- o Initiation Implementation Part 1
- o Integration Framework Inflow PW Implementation
- o Integration Framework Overview
- o Interaction Data Services Part 1
- o Interaction Data Services Part 2
- o Interest Taxes and Charges Foundation
- o Islamic Banking Concepts
- o Islamic Finance Diminishing Musharaka Implementation
- o Islamic Finance Ijara Implementation
- o Islamic Finance Murabaha Implementation
- o Islamic Finance Qard Hasan Implementation
- o Islamic Finance Wakala Musawama Implementation

- o ISO20022 Account Statement (CAMT) Implementation
- o Letters of Credit Implementation Part 1
- o Letters of Credit Implementation Part 2
- o Letters of Credit Implementation Part 2
- o LIBOR Transition to Risk Free Rates Implementation Part 1
- o Limits Foundation Part 1
- o Limits Foundation Part 3
- o Limits Implementation
- o Local Clearing Implementation
- o Microservices Foundation
- o Miscellaneous Deals Implementation Part 1
- o Miscellaneous Deals Implementation Part 2
- o Money Market Part 1
- o Money Market Part 2
- o Multi-Company - Multi-Book Implementation
- o Multi-Currency Accounts Implementation
- o Multi-Tenancy
- o Nostro Reconciliation Implementation
- o Open Financial Service Advanced
- o Open Financial Service Foundation
- o Payment Hub Foundation Part 1
- o Payment Hub Foundation Part 2
- o Payment Hub Implementation Part 1
- o Payment Hub Implementation Part 2
- o Position Management Implementation Part 1
- o Position Management Implementation Part 2
- o Post Closing Implementation
- o Process Led Workshop
- o Process Workflow Advanced
- o Process Workflow Advanced
- o Process Workflow Foundation
- o Programming Components
- o Programming Foundation
- o Project Delivery - Basics
- o Project Delivery - Commercial Basics
- o Project Delivery - Implementation Methodologies
- o Project Delivery - Partner Engagement Models
- o Project Delivery - SaaS Governance
- o PSD2 Account Information Implementation
- o Qualified Intermediary Implementation
- o Repos
- o SaaS Composable Banking Essentials
- o SaaS Microservices Implementation on Azure
- o SaaS XAI FRM Data and Analytics New Features
- o SaaS XAI FRM Data and Analytics New Features
- o SaaS XAI FRM Data and Analytics New Features
- o Swaps Implementation Part 1
- o TAFJ Implementation
- o TBS Global Service Lending Fulfillment Service Overview
- o Technical Concepts
- o Technical Essentials
- o Technologies Induction
- o Teller Foundation Part 2
- o Teller Implementation
- o Temenos Advanced Collection (TAC) Functional
- o Temenos eXplainable Artificial Intelligence (XAI) Part 1
- o Temenos Open Connectivity Framework Part 1
- o Temenos Open Connectivity Framework Part 2
- o Temenos Packager Foundation
- o Temenos Security Authorisation Foundation
- o Temenos Transact Overview
- o Transact Functional New Features
- o Transact Functional New Features
- o Transact Functional New Features
- o Transact Technical New Features
- o Transact Technical New Features
- o Transaction Cyclor Implementation
- o UXP Foundation Essentials with Hybrid Apps
- o Web Services
- o Workbench Advanced
- o Workbench Extensibility
- o Workbench Foundation

- o Workbench Installation
- o AA Account Product Building Implementation Part 1
- o AA Account Product Building Implementation Part 2
- o AA Agent Commission Implementation
- o AA Common Building Blocks Implementation Part 1
- o AA Common Building Blocks Implementation Part 2
- o AA Deposits Foundation Part 1
- o AA Deposits Foundation Part 2
- o AA Deposits Product Building Implementation
- o AA External Product Implementation
- o AA Implementation Part 1
- o AA Implementation Part 2
- o AA Lending Foundation Part 1
- o AA Lending Foundation Part 2
- o AA Lending Product Building Implementation
- o AA Lending Product Building Implementation
- o AA Relationship Pricing Implementation
- o AA Retail Accounts Foundation Part 1
- o AA Retail Accounts Foundation Part 2
- o AA Rewards Implementation
- o AA Safe Deposit Box Implementation
- o AA Technical Customisation
- o AA Technical Integration
- o AA Technical Overview
- o AA Technical Programming
- o AC Accounts Foundation
- o AC Accounts Implementation Part 1
- o AC Accounts Implementation Part 2
- o API Framework Foundation
- o API Framework Published API
- o API Framework Security
- o Architecture Overview
- o Balance Netting Implementation
- o Browser Navigation
- o Business Events Management
- o Cash Pooling Implementation
- o Cheque and Draft Management Foundation
- o Cheque and Draft Management Implementation
- o Cheque Collection Implementation
- o Clearing Framework - Part 1
- o Clearing Framework - Part 2
- o Clearing Implementation
- o Close Of Business Management Foundation
- o Close Of Business Management Global Processing
- o Close Of Business Management Implementation Part 1
- o Close Of Business Management Implementation Part 2
- o Cloud Data Migration
- o Cloud Deployment
- o Collateral Foundation Part 1
- o Collateral Foundation Part 2
- o Collateral Foundation Part 3
- o Collateral Implementation
- o Collections Implementation
- o Common Reporting Standards Implementation
- o Confirmation Matching Implementation
- o Contagion Process Implementation
- o Corporate Actions
- o Corporate Lending Implementation Part 1
- o Corporate Lending Implementation Part 2
- o Customer Data Protection Implementation
- o Customer Foundation Part 1
- o Customer Foundation Part 2
- o Data Event Streaming (DES)
- o Data Framework Relational Replication
- o Data Life Cycle Management
- o Design Studio DSF Rules Designer
- o Design Studio Enquiry Designer
- o Design Studio Enquiry Designer
- o Design Studio Foundation
- o Design Studio IRIS RIM Importer
- o Design Studio Process Workflow Designer
- o Design Studio Screen Designer
- o Design Studio Screen Designer
- o DSF Packager Advanced
- o DSF Packager Foundation

- o Engine Functionality
- o Engine Simulation Screen Capture
- o Engine User Licenses
- o Essentials Part 1
- o Essentials Part 2
- o Event Framework Designer
- o Event Framework Runtime
- o Expected Receipts Implementation
- o Extensibility for Java
- o Factoring and Forfaiting (Bills) Implementation
- o Financial Accounting and Reporting Foundation
- o Financial Accounting Implementation Part 1
- o Financial Accounting Implementation Part 2
- o Financial Inclusion Foundation
- o Financial Reporting Implementation
- o FO Asset Management
- o FO Customer Relationship Manager
- o FO Delivery
- o FO Document Management
- o Forex
- o Forward Rate Agreements Implementation (FRA)
- o Funds Transfer
- o IIB Custom Adapter
- o Implementation Methodology - Transact
- o Initiation Foundation
- o Initiation Foundation
- o Initiation Implementation
- o Installation
- o Instant Payments Implementation Part 1
- o Instant Payments Implementation Part 2
- o Integration Framework Inflow PW Implementation
- o Integration Framework Overview
- o Interest Taxes and Charges Foundation
- o Interest Taxes and Charges Implementation
- o International Cross Border Payments
- o Islamic Banking Concepts
- o Islamic Finance Bai Salam Implementation
- o Islamic Finance Commodity Murabaha Implementation
- o Islamic Finance Diminishing Musharaka Implementation
- o Islamic Finance Ijara Implementation
- o Islamic Finance Murabaha Implementation
- o Islamic Finance Qard Hasan Implementation
- o Islamic Finance Wakala Musawama Implementation
- o Islamic Finance Workflow
- o Kubernetes on Azure Cloud
- o Kubernetes on Google Cloud
- o Letters of Credit Implementation Part 1
- o Letters of Credit Implementation Part 2
- o Letters of Credit Implementation Part 3
- o Letters of Credit Implementation Part 4
- o LIBOR Transition to Risk Free Rates Implementation Part 1
- o LIBOR Transition to Risk Free Rates Implementation Part 2
- o Limits Foundation Part 1
- o Limits Foundation Part 2
- o Limits Foundation Part 3
- o Limits Implementation
- o Loans and Deposits
- o Local Clearing Implementation
- o Microservices and Transact on AWS Cloud
- o Microservices Foundation
- o Microservices Integration
- o Miscellaneous Deals Implementation Part 1
- o Miscellaneous Deals Implementation Part 2
- o Model Bank On Dockers
- o Money Market Part 1
- o Money Market Part 2
- o Mule Adapter
- o Multi-Company - Multi-Book Implementation
- o Nostro Reconciliation Implementation
- o Obligor Objects Implementation
- o Open Financial Service Advanced
- o Open Financial Service

- Foundation
- o Origination Architecture Basic Implementation
- o Past Dues Implementation
- o Payment Financial Crime and SaaS Delta Q2-2021
- o Payment Hub Foundation Part 1
- o Payment Hub Foundation Part 2
- o Payment Hub Implementation Part 1
- o Payment Hub Implementation Part 2
- o Payments and Financial Crime Delta Q3-2021
- o Position Management Implementation Part 1
- o Position Management Implementation Part 2
- o Post Closing Implementation
- o Products Induction
- o Profit Distribution System Implementation
- o Programming Components
- o Programming Foundation
- o Programming Routines
- o Programming Templates
- o Provisioning Implementation
- o PSD2 Account Information Implementation
- o PSD2 Payments Implementation
- o Qualified Intermediary Implementation
- o Repair Designer Part 1
- o Repair Designer Part 2
- o Retail Sweeping Implementation
- o SaaS 2.0 Essentials
- o SaaS 2.0 FCM on Azure
- o SaaS 2.0 Security
- o SaaS 2.1 Automated Test Framework Scripting
- o SaaS 2.1 Extensibility Essentials
- o SaaS Microservices Implementation on Azure
- o SaaS XAI Data and Analytics and FRM Delta Q3-2021
- o Sanction Screening
- o Securities Administration
- o Securities Administration and Trading
- o Securities Back Office Foundation
- o Securities Back Office Implementation
- o Securities Foundation
- o Securities Trading and Management
- o Security Management System
- o Settlements on Securities
- o Standalone Payment Hub - Part 1
- o Standalone Payment Hub - Part 2
- o Swaps Implementation Part 1
- o Swaps Implementation Part 2
- o SWIFT GPI
- o Syndicated Loans Implementation
- o Syndicated Loans Implementation
- o TAFC-TAFJ Migration
- o TAFJ Foundation
- o TAFJ Implementation
- o TARGET Instant Payments Settlement (TIPS) Payment Service
- o TARGET2 MX Implementation
- o Technical Concepts
- o Technical Essentials
- o Teller Foundation Part 1
- o Teller Foundation Part 2
- o Temenos Advanced Collection (TAC)
- o Temenos Cloud Induction
- o Temenos Security Authorisation Foundation
- o Transact Development And Operations Delta Q1-2022
- o Transact Development And Operations Delta Q2-2021
- o Transact Development And Operations Delta Q3-2021
- o Transact Development And Operations Delta Q4-2021
- o Transact Functional 1 Delta Q2-2021
- o Transact Functional 1 Delta Q4-2021
- o Transact Functional 2 Delta Q2-2021
- o Transact Functional 2 Delta Q3-2021
- o Transaction Cyclor Implementation
- o Treasury Front Office Implementation
- o UKMB BBSI Reporting
- o UKMB Financial Services Compensation Scheme (FSCS)
- o UKMB FSCS Continuity of Access

- o UKMB Return Direct Credit
- o UKMB Static Data
- o UXP Advanced Essentials
- o UXP Application Installation
- o UXP Enterprise Platform
- o UXP Enterprise Team
- o UXP Foundation Devices
- o UXP Foundation Essentials with Hybrid Apps
- o UXP Foundation Live CMS
- o UXP Foundation Tables and Charts
- o UXP Foundation Temenos Theme
- o Web Services
- o Workbench Advanced
- o Workbench Foundation
- o Workbench Installation

R20

- o AA Account Product Building Implementation
- o AA Agent Commission Implementation
- o AA Common Building Blocks Implementation
- o AA Deposits Foundation Part 1
- o AA Deposits Foundation Part 2
- o AA Deposits Product Building Implementation
- o AA Implementation
- o AA Lending Foundation Part 1
- o AA Lending Foundation Part 2
- o AA Lending Product Building Implementation
- o AA Retail Accounts Foundation Part 1
- o AA Retail Accounts Foundation Part 2
- o AA Rewards Implementation
- o AA Technical Customisation
- o AA Technical Integration
- o AA Technical Overview
- o AA Technical Programming
- o AC Accounts Foundation
- o AC Accounts Implementation
- o Architecture Overview
- o Balance Netting Implementation
- o Cash Pooling Implementation
- o Cheque and Draft Management Foundation
- o Cheque and Draft Management Implementation
- o Clearing Framework
- o Clearing Implementation

- o Close Of Business Management Foundation
- o Close Of Business Management Global Processing
- o Close Of Business Management Implementation
- o Collateral Foundation Part 1
- o Collateral Foundation Part 2
- o Collateral Implementation
- o Collections Implementation
- o Common Reporting Standards Implementation
- o Consent Management Implementation
- o Corporate Actions
- o Corporate Lending Implementation
- o Customer Data Protection Implementation
- o Data Event Streaming (DES)
- o Derivatives Administration
- o Derivatives Trading and Management
- o Design Studio Advanced Adaptation
- o Design Studio Data Eson Designer
- o Design Studio DSF Packager
- o Design Studio DSF Rules Designer
- o Design Studio Enquiry Designer
- o Design Studio Foundation
- o Design Studio Integration Framework Designer
- o Design Studio IRIS Foundation
- o Design Studio IRIS Published API
- o Design Studio IRIS Security
- o Design Studio Process Workflow Designer
- o Design Studio Screen Designer
- o Design Studio Temenos Workbench Foundation
- o Direct Debits
- o Essentials
- o Expected Receipts Implementation
- o Extensibility for Java
- o Financial Accounting and Reporting Foundation
- o Financial Accounting Implementation
- o Financial Reporting Implementation
- o Funds Transfer
- o IIB Custom Adapter

- o Initiation Foundation
- o Instant Payments Implementation
- o Integration Framework Inflow Foundation
- o Integration Framework Inflow Implementation
- o Integration Framework Inflow PW Implementation
- o Integration Framework Overview
- o Interest, Taxes and Charges Foundation
- o Interest, Taxes and Charges Implementation
- o Letters of Credit Implementation
- o Limits Foundation Part 1
- o Limits Foundation Part 2
- o Limits Implementation
- o Local Clearing Implementation
- o Microservices Advanced Concepts Implementation
- o Microservices Foundation
- o Miscellaneous Deals Implementation
- o Multi-Company - Multi-Book
- o Payment Hub Foundation Part 1
- o Payment Hub Foundation Part 2
- o Payment Hub Implementation
- o Payment Initiation Implementation
- o Products Induction
- o Profit Distribution System Implementation
- o Programming Foundation
- o Programming Routines
- o Programming Templates
- o Provisioning Implementation
- o Repair Designer
- o Retail Sweeping Implementation
- o Securities Administration
- o Securities Administration and Trading
- o Securities Back Office Foundation
- o Securities Back Office Implementation
- o Securities Foundation
- o Settlements on Derivatives
- o Settlements on Securities
- o Standalone Payment Hub
- o SWIFT GPI
- o System Management
- o T24 Securities Trading and Management
- o TAFC-TAFJ Migration

R19

- o TAFJ Foundation
- o TAFJ Implementation
- o Technical Concepts
- o Technologies Induction
- o Temenos eXplainable Artificial Intelligence (XAI)
- o Updates and Upgrade
- o AA Account Product Building Implementation
- o AA Agent Commission Implementation
- o AA Common Building Blocks Implementation
- o AA Deposits Foundation Part 1
- o AA Deposits Foundation Part 2
- o AA Deposits Product Building Implementation
- o AA External Product Implementation
- o AA Implementation
- o AA Lending Foundation Part 1
- o AA Lending Foundation Part 2
- o AA Lending Product Building Implementation
- o AA Retail Accounts Foundation Part 1
- o AA Retail Accounts Foundation Part 2
- o AA Rewards Implementation
- o AA Safe Deposit Box Implementation
- o AC Accounts Foundation
- o Administration
- o Balance Netting Implementation
- o Browser Navigation
- o Cheque and Draft Management Implementation
- o Cheque Collection
- o Clearing Framework
- o Clearing Implementation
- o Close Of Business Management
- o Collateral Foundation Part 1
- o Collateral Foundation Part 2
- o Collateral Implementation
- o Common Reporting Standards Implementation
- o Confirmation Matching Implementation
- o Consent Management Implementation
- o Customer Data Protection Implementation

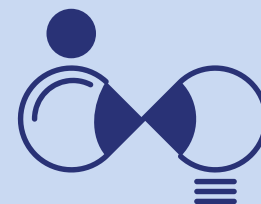
- o Customer Foundation Part 1
- o Customisation
- o Data Framework Relational Replication
- o Data Life Cycle Management
- o Design Studio Advanced Adaptation
- o Design Studio Data Eson Designer
- o Design Studio Enquiry Designer
- o Design Studio Foundation
- o Design Studio Integration Framework Designer
- o Design Studio IRIS Event Processing
- o Design Studio IRIS Foundation
- o Design Studio IRIS Publishing API
- o Design Studio IRIS RIM Importer
- o Design Studio IRIS Security
- o Design Studio Process Workflow Designer
- o Design Studio SCM Integration
- o Design Studio Screen Designer
- o Design Studio T24 Extensibility for Java
- o Direct Debits
- o Essentials
- o Expected Receipts Implementation
- o Factoring and Forfaiting (Bills) Implementation
- o Financial Accounting and Reporting Foundation
- o Financial Accounting Implementation
- o Financial Reporting Implementation
- o FO Customer Relationship Manager
- o Forex
- o Forward Rate Agreements Implementation (FRA)
- o Funds Transfer
- o IBS Technical Utilities
- o IIB Custom Adapter
- o Instant Payments Implementation
- o Integration Framework Runtime
- o Interest, Taxes and Charges Foundation
- o Interest, Taxes and Charges Implementation
- o Islamic Banking Concepts
- o Islamic Finance Bai Salam Implementation
- o Islamic Finance Commodity Murabaha Implementation
- o Islamic Finance Diminishing Musharaka Implementation
- o Islamic Finance Ijara Implementation
- o Islamic Finance Murabaha Implementation
- o Islamic Finance Qard Hasan Implementation
- o Islamic Finance Wakala Musawama Implementation
- o Islamic Finance Workflow
- o Letters of Credit Implementation
- o Limits Foundation Part 1
- o Limits Foundation Part 2
- o Loans and Deposits
- o Local Clearing Implementation
- o Miscellaneous Deals Implementation
- o Money Market
- o Mule Adapter
- o Multi-Company - Multi-Book
- o Nostro Reconciliation Implementation
- o Open Financial Service
- o Origination Architecture Basic Implementation
- o Packaging and Deployment Utilities
- o Past Dues Implementation
- o Payment Hub Implementation
- o Payment Initiation Implementation
- o Position Management Implementation
- o Post Closing Implementation
- o Profit Distribution System Implementation
- o Programming Foundation
- o Programming Routines
- o Programming Templates
- o Provisioning Implementation
- o Security Management System
- o Standalone Payment Hub
- o Swaps Implementation
- o Syndicated Loans Implementation
- o TAFJ (Temenos Application Framework Java)
- o Technical Concepts
- o Teller Foundation Part 1
- o Teller Foundation Part 2

- o Teller Implementation
- o Transaction Cyclers Implementation
- o Treasury Front Office Implementation
- o Updates and Upgrade
- o Web Services

Annual Cost \$1,400.00

Infinity – Digital Front Office

Courses Available: 100



R22

- o Components Implementation
- o Corporate Origination Foundation
- o Digital Banking Apps Extensibility Advanced
- o Digital Banking Apps Technical Foundation Part 2
- o Engage
- o Engine Functionality
- o Essentials
- o Implementation Methodology - Infinity
- o Implementation Methodology - Transact
- o Infinity UXP and TCD New Features
- o Infinity UXP and TCD New Features
- o Infinity UXP and TCD New Features
- o Journey Platform Architecture
- o Process Led Workshop
- o Project Delivery - Basics
- o Project Delivery - Commercial Basics
- o Project Delivery - Implementation Methodologies
- o Project Delivery - Partner Engagement Models
- o Project Delivery - SaaS Governance
- o Retail Origination Foundation
- o SaaS Microservices Implementation on Azure
- o SaaS XAI FRM Data and Analytics New Features
- o SaaS XAI FRM Data and Analytics New Features
- o SaaS XAI FRM Data and Analytics New Features
- o Salesforce Integration
- o Technologies Induction
- o Temenos Transact Overview
- o UXP Foundation Essentials with Hybrid Apps

R21

- o Components Implementation
- o Corporate Origination Foundation
- o Delta Training 9.0
- o Developer Bootcamp with Visualizer and Fabric 9.0
- o Developer Bootcamp with Visualizer and Fabric 9.0 Delta
- o Engage
- o Engine Functionality
- o Engine Simulation Screen Capture
- o Engine User Licenses
- o Essentials
- o Essentials - Technical Part 1
- o Essentials - Technical Part 2
- o Essentials - Technical Part 3
- o Implementation Methodology - Infinity
- o Implementation Methodology - Transact
- o Infinity Analytics Datalake UXP and XAI Delta Q2-2021
- o Infinity UXP and TCD Delta Q1-2022
- o Installation
- o Journey Analytics Foundation
- o Journey Maestro Form Builders
- o Journey Manager for Platform Developers
- o Journey Manager Operation Cloud
- o Journey Manager Operation On Premises
- o Journey Manager Platform Overview
- o Journey Platform Architecture
- o Microservices Implementation
- o Origination Foundation
- o Origination Technical Foundation
- o Products Induction
- o Quantum Platform Overview
- o Quantum Testing Framework Foundation
- o Retail Banking Apps Foundation
- o Small and Medium Enterprise (SME) Banking Part 1

- o Small and Medium Enterprise (SME) Banking Part 2
- o Spotlight
- o Upgrade
- o UXP Advanced Essentials
- o UXP Application Installation
- o UXP Enterprise Platform
- o UXP Enterprise Team
- o UXP Foundation Devices
- o UXP Foundation Essentials with Hybrid Apps
- o UXP Foundation Live CMS
- o UXP Foundation Tables and Charts
- o UXP Foundation Temenos Theme
- o Wealth App Foundation

R20

- o Customer Onboarding Foundation
- o Delta Training 8.2
- o Delta Training 8.3
- o Delta Training 8.4
- o Developer Bootcamp with Visualizer and Fabric 8.0
- o Engage
- o Essentials
- o Essentials - Technical
- o Installation

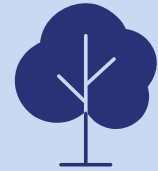
R19

- o Products Induction
- o Retail Banking Apps Extensibility
- o Retail Banking Apps Extensibility Advanced
- o Retail Banking Apps Foundation
- o Retail Banking Apps Technical Foundation
- o Small and Medium Enterprise (SME) Banking
- o Spotlight
- o Technologies Induction
- o Upgrade
- o Journey Analytics Foundation
- o Journey Maestro Form Builders
- o Journey Manager for Platform Developers
- o Journey Manager Operation On Premises
- o Journey Manager Platform Overview
- o Journey Platform Architecture
- o Journey Platform Operation Cloud
- o Microservices

Annual Cost \$1,400.00

Wealth Management

Courses Available: 249



R23

- o Design Studio Screen Designer

R22

- o AA Retail Accounts Foundation Part 1
- o AA Retail Accounts Foundation Part 2
- o AC Accounts Foundation
- o AC Accounts Implementation Part 1
- o AC Accounts Implementation Part 2
- o API Framework Foundation
- o Browser Navigation
- o CH CRM Client and Contact Management
- o CH PM Foundation and Navigation
- o Customer Foundation Part 1
- o Customer Foundation Part 2
- o Design Studio Data Eson Designer
- o Design Studio Screen Designer
- o Engine Functionality
- o Financial Accounting and Reporting Foundation
- o Financial Accounting Implementation Part 1
- o Financial Accounting Implementation Part 2
- o FO PM Advanced Constraint Management
- o FO PM Data Administration and Security Overview
- o FO PM Design Studio Administration
- o FO PM Design Studio Foundation
- o FO PM Design Studio Odata API
- o FO PM Design Studio WUI Adaptation
- o FO PM Design Studio WUI Processes
- o FO PM Instrument Templates Orders
- o FO PM Managed Accounts
- o FO PM Monitoring and Performance
- o FO PM System Management
- o Fund Administration and Wealth Management New Features
- o Fund Administration and Wealth Management New Features
- o Fund Administration and Wealth Management New Features
- o Implementation Methodology - Transact
- o Implementation Methodology - Wealth
- o Limits Foundation Part 1
- o Limits Foundation Part 3
- o Limits Implementation
- o Process Led Workshop
- o Project Delivery - Basics
- o Project Delivery - Commercial Basics
- o Project Delivery - Implementation Methodologies
- o Project Delivery - Partner Engagement Models
- o Project Delivery - SaaS Governance
- o SaaS XAI FRM Data and Analytics New Features
- o SaaS XAI FRM Data and Analytics New Features
- o SaaS XAI FRM Data and Analytics New Features
- o Technologies Induction
- o Temenos Packager Foundation
- o Temenos Transact Overview
- o WealthSuite Overview
- o WealthSuite Overview
- o Workbench Advanced
- o Workbench Foundation
- o Workbench Installation
- o WS TTI Cash and Securities
- o WS TTI Client and Portfolio
- o WS TTI Foundation
- o WS TTI Functional Concepts
- o WS TTI Order Management

- o AA Retail Accounts Foundation Part 1
- o AA Retail Accounts Foundation Part 2
- o AC Accounts Foundation
- o AC Accounts Implementation Part 1
- o AC Accounts Implementation Part 2
- o API Framework Foundation
- o API Framework Published API
- o API Framework Security
- o Browser Navigation
- o CH IB Retail Essentials for Administration
- o CH IB Retail Essentials for Business
- o CH PM Advisory
- o CH PM Analysis
- o CH PM Foundation and Navigation
- o CH PM Installation
- o CH PM Order Initiation and Processing
- o CH PM Orders and Transfers
- o CH Real Time Engagement (Digital Engagement)
- o Corporate Actions
- o Customer Foundation Part 1
- o Customer Foundation Part 2
- o Datasource Architecture
- o Datasource Installation
- o Design Studio DSF Rules Designer
- o Design Studio Enquiry Designer
- o Design Studio Enquiry Designer
- o Design Studio Foundation
- o Design Studio IRIS RIM Importer
- o Design Studio Screen Designer
- o Design Studio Screen Designer
- o DSF Packager Advanced
- o DSF Packager Foundation
- o Engine Functionality
- o Engine Simulation Screen Capture
- o Engine User Licenses
- o Event Framework Designer
- o Financial Accounting and Reporting Foundation
- o Financial Accounting Implementation Part 1
- o Financial Accounting Implementation Part 2
- o FO Asset Management
- o FO Customer Relationship Manager
- o FO Delivery
- o FO Document Management
- o FO PM Advanced Constraint Management
- o FO PM Advanced Performance Analysis - Attribution
- o FO PM Advanced Performance Analysis - Standard
- o FO PM Architecture
- o FO PM Data Administration and Security Overview
- o FO PM Design Studio Administration
- o FO PM Design Studio Foundation
- o FO PM Design Studio Odata API
- o FO PM Design Studio WUI Adaptation
- o FO PM Design Studio WUI Processes
- o FO PM Installation (NuoDB)
- o FO PM Installation (Oracle)
- o FO PM Installation (Sybase)
- o FO PM Instrument Templates Orders
- o FO PM IPO Subscription
- o FO PM Managed Accounts
- o FO PM Monitoring and Performance
- o FO PM Operations and Positions
- o FO PM Order Management
- o FO PM Portfolio Strategies
- o FO PM Questionnaire
- o FO PM Scripts and Formats
- o FO PM System Management
- o FO PM TSL Administration
- o FO Web Admin Console
- o Fund Administration and Wealth Management Delta Q2-2021
- o Fund Administration and Wealth Management Delta Q3-2021
- o Fund Administration and Wealth Management Delta Q4-2021
- o Implementation Methodology - Transact
- o Limits Foundation Part 1
- o Limits Foundation Part 2
- o Limits Foundation Part 3
- o Limits Implementation
- o Products Induction
- o Securities Administration
- o Securities Administration and Trading

- o Securities Back Office Foundation
- o Securities Back Office Implementation
- o Securities Foundation
- o Securities Trading and Management
- o Settlements on Securities
- o Wealth App Foundation
- o WealthSuite Overview
- o Workbench Advanced
- o Workbench Foundation
- o Workbench Installation
- o WS TTI Architecture
- o WS TTI Cash and Securities
- o WS TTI Client and Portfolio
- o WS TTI Derivatives
- o WS TTI Foundation
- o WS TTI Functional Concepts
- o WS TTI Order Management

R20

- o AA Retail Accounts Foundation Part 1
- o AA Retail Accounts Foundation Part 2
- o AC Accounts Foundation
- o AC Accounts Implementation
- o CH CRM Client and Contact Management
- o CH PM Advisory
- o CH PM B2F
- o CH PM F2B
- o Corporate Actions
- o Datasource Architecture
- o Design Studio Advanced Adaptation
- o Design Studio Data Eson Designer
- o Design Studio DSF Packager
- o Design Studio DSF Rules Designer
- o Design Studio Enquiry Designer
- o Design Studio Foundation
- o Design Studio Integration Framework Designer
- o Design Studio IRIS Foundation
- o Design Studio IRIS Published API
- o Design Studio IRIS Security
- o Design Studio Screen Designer
- o Design Studio Temenos Workbench Foundation
- o Financial Accounting and Reporting Foundation
- o Financial Accounting Implementation
- o FO PM Advanced Performance

- o Analysis - Attribution
- o FO PM Advanced Performance Analysis - Standard
- o FO PM Advisory
- o FO PM B2F
- o FO PM Data Administration and Security Overview
- o FO PM F2B
- o FO PM Operations and Positions
- o FO PM Portfolio Strategies
- o FO PM Questionnaire
- o FO PM Scripts and Formats
- o FO PM Tax Lots Management
- o Limits Foundation Part 1
- o Limits Foundation Part 2
- o Limits Implementation
- o Products Induction
- o Securities Administration
- o Securities Administration and Trading
- o Securities Back Office Foundation
- o Securities Back Office Implementation
- o Securities Foundation
- o Settlements on Securities
- o T24 Securities Trading and Management
- o Technologies Induction
- o WealthSuite Overview

R19

- o AA Retail Accounts Foundation Part 1
- o AA Retail Accounts Foundation Part 2
- o AC Accounts Foundation
- o Browser Navigation
- o CH PM Adaptation
- o CH PM B2F
- o Customer Foundation Part 1
- o Datasource Architecture
- o Datasource Installation
- o Design Studio Advanced Adaptation
- o Design Studio Data Eson Designer
- o Design Studio Enquiry Designer
- o Design Studio Foundation
- o Design Studio Integration Framework Designer
- o Design Studio IRIS Event Processing
- o Design Studio IRIS Foundation
- o Design Studio IRIS Publishing API
- o Design Studio IRIS RIM Importer

- o Design Studio IRIS Security
- o Design Studio Process Workflow Designer
- o Design Studio SCM Integration
- o Design Studio Screen Designer
- o Design Studio T24 Extensibility for Java
- o Financial Accounting and Reporting Foundation
- o Financial Accounting Implementation
- o FO Customer Relationship Manager
- o FO PM Advanced Constraint Management
- o FO PM Advanced Performance Analysis - Attribution
- o FO PM Advanced Performance Analysis - Standard

- o FO PM Design Studio Administration
- o FO PM Design Studio Foundation
- o FO PM Design Studio WUI Adaptation
- o FO PM Design Studio WUI Processes
- o FO PM IPO Subscription
- o FO PM Operations and Positions
- o FO PM Order Management
- o FO PM Portfolio Strategies
- o FO PM Questionnaire
- o FO PM Reporting Adaptation
- o FO PM Reporting Foundation
- o FO PM Scripts and Formats
- o Limits Foundation Part 1
- o Limits Foundation Part 2
- o WS TTI Foundation

Annual Cost \$1,400.00

Payments

Courses Available: 132



R22

- o Cheque and Draft Management Foundation
- o Cheque Collection Implementation
- o Engine Functionality
- o Expected Receipts Implementation
- o Funds Transfer
- o Implementation Methodology - Transact
- o Initiation Foundation
- o Initiation Implementation Part 1
- o ISO20022 Account Statement (CAMT) Implementation
- o Local Clearing Implementation
- o Payment and Financial Crime New Features
- o Payment and Financial Crime New Features
- o Payment and Financial Crime New Features
- o Payment Hub Foundation Part 1
- o Payment Hub Foundation Part 2
- o Payment Hub Implementation Part 1
- o Payment Hub Implementation Part 2
- o Process Led Workshop
- o Project Delivery - Basics
- o Project Delivery - Commercial Basics
- o Project Delivery - Implementation Methodologies
- o Project Delivery - Partner Engagement Models
- o Project Delivery - SaaS Governance
- o PSD2 Account Information Implementation
- o SaaS XAI FRM Data and Analytics New Features
- o SaaS XAI FRM Data and Analytics New Features
- o SaaS XAI FRM Data and Analytics New Features

R21

- o Technologies Induction
- o Teller Foundation Part 2
- o Teller Implementation
- o Cheque and Draft Management Foundation
- o Cheque and Draft Management Implementation
- o Cheque Collection Implementation
- o Clearing Framework - Part 1
- o Clearing Framework - Part 2
- o Clearing Implementation
- o Engine Functionality
- o Engine Simulation Screen Capture
- o Engine User Licenses
- o Expected Receipts Implementation
- o Funds Transfer
- o Implementation Methodology - Transact
- o Initiation Foundation
- o Initiation Foundation
- o Initiation Implementation
- o Instant Payments Implementation Part 1
- o Instant Payments Implementation Part 2
- o International Cross Border Payments
- o Local Clearing Implementation
- o Payment Financial Crime and SaaS Delta Q2-2021
- o Payment Hub Foundation Part 1
- o Payment Hub Foundation Part 2
- o Payment Hub Implementation Part 1
- o Payment Hub Implementation Part 2
- o Payments and Financial Crime Delta Q3-2021
- o Products Induction
- o PSD2 Account Information Implementation

- o PSD2 Payments Implementation
- o Repair Designer Part 1
- o Repair Designer Part 2
- o SaaS XAI Data and Analytics and FRM Delta Q3-2021
- o Sanction Screening
- o Standalone Payment Hub - Part 1
- o Standalone Payment Hub - Part 2
- o SWIFT GPI
- o TARGET Instant Payments Settlement (TIPS) Payment Service
- o TARGET2 MX Implementation
- o Teller Foundation Part 1
- o Teller Foundation Part 2

R20

- o Cheque and Draft Management Foundation
- o Cheque and Draft Management Implementation
- o Clearing Framework
- o Clearing Implementation
- o Direct Debits
- o Expected Receipts Implementation
- o Funds Transfer
- o Initiation Foundation
- o Instant Payments Implementation
- o Local Clearing Implementation
- o Payment Hub Foundation Part 1
- o Payment Hub Foundation Part 2
- o Payment Hub Implementation
- o Payment Initiation Implementation
- o Products Induction
- o Repair Designer
- o Standalone Payment Hub
- o SWIFT GPI
- o Technologies Induction

R19

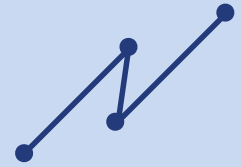
- o AA Retail Accounts Foundation Part 1
- o AA Retail Accounts Foundation Part 2
- o AC Accounts Foundation
- o Browser Navigation
- o CH PM Adaptation
- o CH PM B2F
- o Customer Foundation Part 1
- o Datasource Architecture

- o Datasource Installation
- o Design Studio Advanced Adaptation
- o Design Studio Data Eson Designer
- o Design Studio Enquiry Designer
- o Design Studio Foundation
- o Design Studio Integration Framework Designer
- o Design Studio IRIS Event Processing
- o Design Studio IRIS Foundation
- o Design Studio IRIS Publishing API
- o Design Studio IRIS RIM Importer
- o Design Studio IRIS Security
- o Design Studio Process Workflow Designer
- o Design Studio SCM Integration
- o Design Studio Screen Designer
- o Design Studio T24 Extensibility for Java
- o Financial Accounting and Reporting Foundation
- o Financial Accounting Implementation
- o FO Customer Relationship Manager
- o FO PM Advanced Constraint Management
- o FO PM Advanced Performance Analysis - Attribution
- o FO PM Advanced Performance Analysis - Standard
- o FO PM Design Studio Administration
- o FO PM Design Studio Foundation
- o FO PM Design Studio WUI Adaptation
- o FO PM Design Studio WUI Processes
- o FO PM IPO Subscription
- o FO PM Operations and Positions
- o FO PM Order Management
- o FO PM Portfolio Strategies
- o FO PM Questionnaire
- o FO PM Reporting Adaptation
- o FO PM Reporting Foundation
- o FO PM Scripts and Formats
- o Limits Foundation Part 1
- o Limits Foundation Part 2
- o WS TTI Foundation

Annual Cost \$800.00

Fund Administration

Courses Available: 138



R22

- o Accounting Engine
- o Classification Engine
- o Engine Functionality
- o Exchange Traded Funds
- o Fund Administration and Wealth Management New Features
- o Fund Administration and Wealth Management New Features
- o Fund Administration and Wealth Management New Features
- o Global Accounting Australian Taxes
- o Global Accounting Bank Debt
- o Global Accounting Data Mart and Investment Book Of Records (IBOR) Foundation
- o Global Accounting Derivatives
- o Global Accounting Equalisation
- o Global Accounting Foundation
- o Global Accounting Fund Pricing
- o Global Accounting Fund Structure
- o Global Accounting Implementation Part 1
- o Global Accounting Implementation Part 2
- o Global Accounting Valuation Method
- o Global Accounting Workflow and Exception Monitor (WEM)
- o Global Investor Anti Dilution Levy (ADL)
- o Global Investor Anti-Money Laundering (AML) Foundation
- o Global Investor Contingent Deferred Sales Charge (CDSC)
- o Global Investor Data Mart Foundation
- o Global Investor Foreign Account Tax Compliance Act (FATCA) and Common Reporting Standard (CRS) Foundation
- o Global Investor Foundation
- o Global Investor General Ledger
- o Global Investor National Securities Clearing Corporation

(NSCC)

- o Global Investor Payments
- o Global Investor Receipts
- o Global Investor Swift
- o Global Investor Tax
- o Global Investor Workflow and Exception Monitor (WEM)
- o Implementation Methodology - Transact
- o Migration Module
- o Process Led Workshop
- o Project Delivery - Basics
- o Project Delivery - Commercial Basics
- o Project Delivery - Implementation Methodologies
- o Project Delivery - Partner Engagement Models
- o Project Delivery - SaaS Governance
- o SaaS XAI FRM Data and Analytics New Features
- o SaaS XAI FRM Data and Analytics New Features
- o SaaS XAI FRM Data and Analytics New Features
- o Technical Performance Tuning for Global Accounting
- o Technical Single Sign On (SSO)
- o Technologies Induction
- o Workflow and Exception Monitor (WEM) Technical

R21

- o Data Segregation and Data Masking
- o Engine Functionality
- o Engine Simulation Screen Capture
- o Engine User Licenses
- o Fund Administration and Wealth Management Delta Q2-2021
- o Fund Administration and Wealth Management Delta Q3-2021
- o Fund Administration and Wealth Management Delta Q4-2021

- o Global Accounting Australian Taxes
- o Global Accounting Bank Debt
- o Global Accounting Data Mart and Investment Book Of Records (IBOR) Foundation
- o Global Accounting Derivatives
- o Global Accounting Equalisation
- o Global Accounting Foundation
- o Global Accounting Fund Pricing
- o Global Accounting Fund Structure
- o Global Accounting Implementation Part 1
- o Global Accounting Implementation Part 2
- o Global Accounting Valuation Method
- o Global Accounting Workflow and Exception Monitor (WEM)
- o Global Investor Anti Dilution Levy (ADL)
- o Global Investor Anti-Money Laundering (AML) Foundation
- o Global Investor Contingent Deferred Sales Charge (CDSC)
- o Global Investor Daily Dividends
- o Global Investor Data Mart Foundation
- o Global Investor Foreign Account Tax Compliance Act (FATCA) and Common Reporting Standard (CRS) Foundation
- o Global Investor Foundation
- o Global Investor General Ledger
- o Global Investor National Securities Clearing Corporation (NSCC)
- o Global Investor Payments
- o Global Investor Receipts
- o Global Investor Retrocessions
- o Global Investor Swift
- o Global Investor Tax
- o Global Investor Workflow and Exception Monitor (WEM)
- o Implementation Methodology - Transact
- o Products Induction
- o SQL Technical
- o Technical Data Mart for Global Accounting
- o Technical Data Mart for Global Investor
- o Technical Performance Tuning for

R20

- Global Accounting
- o Technical Single Sign On (SSO)
- o Workflow and Exception Monitor (WEM) Technical
- o Data Segregation and Data Masking
- o Global Accounting Data Mart and Investment Book Of Records (IBOR) Foundation
- o Global Accounting Derivatives
- o Global Accounting Equalisation
- o Global Accounting Foundation
- o Global Accounting Fund Pricing
- o Global Accounting Fund Structure
- o Global Accounting Implementation
- o Global Accounting Valuation Method
- o Global Accounting Workflow and Exception Monitor (WEM)
- o Global Investor Anti Dilution Levy (ADL)
- o Global Investor Anti-Money Laundering (AML) Foundation
- o Global Investor Contingent Deferred Sales Charge (CDSC)
- o Global Investor Data Mart Foundation
- o Global Investor Foreign Account Tax Compliance Act (FATCA) and Common Reporting Standard (CRS) Foundation
- o Global Investor Foundation
- o Global Investor General Ledger
- o Global Investor Receipts
- o Global Investor Tax
- o Global Investor Workflow and Exception Monitor (WEM)
- o Products Induction
- o SQL Technical
- o Technical Data Mart for Global Accounting
- o Technical Data Mart for Global Investor
- o Technical Single Sign On (SSO)
- o Technologies Induction
- o Workflow and Exception Monitor (WEM) Technical

R19

- o Anti Dilution Levy (ADL) Points
- o Automation Framework
- o Coding Standards

- o Contingent Deferred Sales Charge (CDSC)
- o Data Mart in Multifonds Global Accounting (MFGA)
- o Data Mart in Multifonds Global Investor (MFGI)
- o Data Segregation and Data Masking
- o Financial Market Basics
- o General Ledger
- o Guideline for SUP Database
- o Induction Basic Multifonds Global Accounting (MFGA)
- o Induction Basic Multifonds Global Investor (MFGI)
- o Oracle Test Manager (OTM) and Oracle Functional Testing (OFT)
- o Receipts
- o Single Sign On (SSO) Architecture and Workflow
- o SQL
- o SQL and PL SQL Best Practices
- o SVN
- o Taxes
- o Technical Support Basics Introduction
- o Temenos Multifonds University (TMFU) Workflow and Exception Monitor (WEM)
- o Users Screen

Annual Cost \$800.00

Analytics

Courses Available: 77



R22

- o Application Navigation
- o Application Pivot Reports
- o Engine Functionality
- o Implementation Methodology - Transact
- o Introduction to Data Event Streaming (DES)
- o Process Led Workshop
- o Product Introduction - Business
- o Product Introduction - Technical
- o Project Delivery - Basics
- o Project Delivery - Commercial Basics
- o Project Delivery - Implementation Methodologies
- o Project Delivery - Partner Engagement Models
- o Project Delivery - SaaS Governance
- o SaaS XAI FRM Data and Analytics New Features
- o SaaS XAI FRM Data and Analytics New Features
- o SaaS XAI FRM Data and Analytics New Features
- o Technologies Induction
- o Temenos Analytics Architecture Dataflow and Configuration
- o Temenos Data Engineering Architecture in Transact Data Hub
- o Transact Data Hub Data Lake Dataflow and Configuration
- o Transact Data Hub Installation on Azure

R21

- o Application Groups Data Relationship and Datasets
- o Application KPI Information Tiles and Dashboard
- o Application Navigation
- o Engine Functionality
- o Engine Simulation Screen Capture
- o Engine User Licenses
- o Implementation Methodology -

R20

- Transact
- o Infinity UXP and TCD Delta Q1-2022
- o Introduction to Data Event Streaming (DES)
- o Metadata Management System
- o Product Introduction - Business
- o Product Introduction - Business
- o Products Induction
- o Quick Reports
- o Temenos Analytics Architecture Dataflow and Configuration
- o Temenos Data Engineering and Navigation - Administrator
- o Temenos Data Engineering and Navigation - Designer
- o Temenos Data Engineering and Navigation - Scheduler
- o Temenos Data Engineering Architecture in Transact Data Hub, Temenos Data Lake and Analytics
- o Transact Data Hub Data Lake Dataflow and Configuration
- o Transact Data Hub Overview
- o Transact Data Hub Temenos Data Lake and Temenos Analytics Overview
- o Application Groups Data Relationship and Datasets
- o Application KPI Information Tiles and Dashboard
- o Application Navigation
- o Application Pivot Reports
- o Introduction to Data Event Streaming (DES)
- o Metadata Management System
- o Product Introduction - Business
- o Products Induction
- o Quick Reports
- o Technologies Induction
- o Temenos Data Engineering and Navigation - Administrator
- o Temenos Data Engineering and

- Navigation - Deployer
- o Temenos Data Engineering and Navigation - Designer
- o Temenos Data Engineering and Navigation - Scheduler
- o Temenos Data Engineering Architecture in Transact Data Hub, Temenos Data Lake and Analytics
- o Transact Data Hub Temenos Data Lake and Temenos Analytics Overview

R19

- o Application Data Manager
- o Application Groups Data Relationship and Datasets
- o Application Info Tiles and Dashboard Hub
- o Application KPI Dashboard
- o Application Navigation
- o Application Pivot Reports

- o Data ExStore and Reporting Platform
- o Development Tools and Local Configuration
- o Introduction to Temenos Data Engineering and Temenos Operational Data Store
- o Introduction to Temenos Data Lake
- o Predictive Analytics
- o Product Introduction - Business
- o Product Introduction - Technical
- o Quick Reports and Custom Reports
- o Temenos Data Engineering and Navigation - Administrator
- o Temenos Data Engineering and Navigation - Deployer
- o Temenos Data Engineering and Navigation - Designer
- o Temenos Data Engineering and Navigation - Scheduler

Annual Cost \$800.00

Financial Crime Mitigation

Courses Available: 41



R22

- o Engine Functionality
- o Implementation Methodology - Transact
- o Payment and Financial Crime New Features
- o Payment and Financial Crime New Features
- o Payment and Financial Crime New Features
- o Process Led Workshop
- o Project Delivery - Basics
- o Project Delivery - Commercial Basics
- o Project Delivery - Implementation Methodologies
- o Project Delivery - Partner Engagement Models
- o Project Delivery - SaaS Governance
- o SaaS XAI FRM Data and Analytics New Features
- o SaaS XAI FRM Data and Analytics New Features
- o SaaS XAI FRM Data and Analytics New Features
- o Technologies Induction

R21

- o AML Transaction Monitoring (Profile)
- o Configuration Functional Implementation
- o Customer Sanctions and Watch Lists (Screen)
- o Engine Functionality
- o Engine Simulation Screen Capture
- o Engine User Licenses

R20

- o Financial Crime (FCM) Overview
- o Financial Crime (FCM) Technical Foundation Advanced
- o Implementation Methodology - Transact
- o Knowledge Manager Functional Implementation
- o KYC Customer Risk Assessment (KC+)
- o Payment Financial Crime and SaaS Delta Q2-2021
- o Payment Fraud Monitoring (SAP)
- o Payments and Financial Crime Delta Q3-2021
- o Products Induction
- o SaaS XAI Data and Analytics and FRM Delta Q3-2021
- o Security Functional Implementation
- o Transaction Sanctions Filtering (Screen)

R19

- o Financial Crime (FCM) Functional Foundation
- o Financial Crime (FCM) Functional Implementation
- o Financial Crime (FCM) Technical Foundation
- o Financial Crime (FCM) Technical Foundation Advanced
- o Products Induction
- o Technologies Induction
- o Financial Crime (FCM) Functional Foundation
- o Financial Crime (FCM) Functional Implementation

Annual Cost \$800.00

Transact – Migration

Courses Available: 146



R23

- o Design Studio Screen Designer
- o Integration Framework Inflow PW Implementation

R22

- o Administration Implementation
- o API Framework Foundation
- o Architecture Overview
- o Browser Navigation
- o Close Of Business Management Implementation Part 1
- o Design Studio Data Eson Designer
- o Design Studio Screen Designer
- o FO PM Design Studio Administration
- o Implementation Methodology - Transact
- o Integration Framework Inflow PW Implementation
- o Integration Framework Overview
- o Multi-Tenancy
- o Open Financial Service Advanced
- o Open Financial Service Foundation
- o Programming Components
- o Programming Foundation
- o Project Delivery - Basics
- o Project Delivery - Commercial Basics
- o Project Delivery - Implementation Methodologies
- o Project Delivery - Partner Engagement Models
- o Project Delivery - SaaS Governance
- o TAFJ Implementation
- o Technical Concepts
- o Technical Essentials
- o Temenos eXplainable Artificial Intelligence (XAI) Part 1
- o Temenos Open Connectivity Framework Part 1
- o Temenos Open Connectivity Framework Part 2
- o Temenos Packager Foundation
- o Web Services

R21

- o Workbench Advanced
- o Workbench Foundation
- o Workbench Installation
- o API Framework Foundation
- o API Framework Published API
- o API Framework Security
- o Architecture Overview
- o Browser Navigation
- o Business Events Management
- o Close Of Business Management Foundation
- o Close Of Business Management Global Processing
- o Close Of Business Management Implementation Part 1
- o Close Of Business Management Implementation Part 2
- o Data Framework Relational Replication
- o Data Life Cycle Management
- o Design Studio DSF Rules Designer
- o Design Studio Enquiry Designer
- o Design Studio Enquiry Designer
- o Design Studio Foundation
- o Design Studio IRIS RIM Importer
- o Design Studio Process Workflow Designer
- o Design Studio Screen Designer
- o Design Studio Screen Designer
- o DSF Packager Advanced
- o DSF Packager Foundation
- o Event Framework Designer
- o Event Framework Runtime
- o Extensibility for Java
- o FO PM Design Studio Administration
- o IIB Custom Adapter
- o Implementation Methodology - Transact
- o Installation
- o Integration Framework Inflow PW Implementation
- o Integration Framework Overview
- o Open Financial Service Advanced

- o Open Financial Service Foundation
- o Programming Components
- o Programming Foundation
- o Programming Routines
- o Programming Templates
- o Security Management System
- o TAFC-TAFJ Migration
- o TAFJ Foundation
- o TAFJ Implementation
- o Technical Concepts
- o Technical Essentials
- o Web Services
- o Workbench Advanced
- o Workbench Foundation
- o Workbench Installation

R20

- o Architecture Overview
- o Close Of Business Management Global Processing
- o Close Of Business Management Implementation
- o Design Studio Advanced Adaptation
- o Design Studio Data Eson Designer
- o Design Studio DSF Packager
- o Design Studio DSF Rules Designer
- o Design Studio Enquiry Designer
- o Design Studio Foundation
- o Design Studio Integration Framework Designer
- o Design Studio IRIS Foundation
- o Design Studio IRIS Published API
- o Design Studio IRIS Security
- o Design Studio Process Workflow Designer
- o Design Studio Screen Designer
- o Design Studio Temenos Workbench Foundation
- o Extensibility for Java
- o IIB Custom Adapter
- o Integration Framework Inflow Foundation
- o Integration Framework Inflow Implementation
- o Integration Framework Inflow PW Implementation
- o Integration Framework Overview
- o Programming Foundation
- o Programming Routines
- o Programming Templates

R19

- o System Management
- o TAFC-TAFJ Migration
- o TAFJ Foundation
- o TAFJ Implementation
- o Technical Concepts
- o Temenos eXplainable Artificial Intelligence (XAI)
- o Updates and Upgrade
- o Administration
- o Browser Navigation
- o Close Of Business Management
- o Customisation
- o Data Framework Relational Replication
- o Data Life Cycle Management
- o Design Studio Advanced Adaptation
- o Design Studio Data Eson Designer
- o Design Studio Enquiry Designer
- o Design Studio Foundation
- o Design Studio Integration Framework Designer
- o Design Studio IRIS Event Processing
- o Design Studio IRIS Foundation
- o Design Studio IRIS Publishing API
- o Design Studio IRIS RIM Importer
- o Design Studio IRIS Security
- o Design Studio Process Workflow Designer
- o Design Studio SCM Integration
- o Design Studio Screen Designer
- o Design Studio T24 Extensibility for Java
- o FO PM Design Studio Administration
- o IIB Custom Adapter
- o Integration Framework Runtime
- o Open Financial Service
- o Packaging and Deployment Utilities
- o Programming Foundation
- o Programming Routines
- o Programming Templates
- o Security Management System
- o TAFJ (Temenos Application Framework Java)
- o Technical Concepts
- o Updates and Upgrade
- o Web Services

Annual Cost \$800.00

Transact – Upgrade

Courses Available: 52



R22

- o Administration Implementation
- o Architecture Overview
- o Browser Navigation
- o Implementation Methodology - Transact
- o Programming Components
- o Programming Foundation
- o Project Delivery - Basics
- o Project Delivery - Commercial Basics
- o Project Delivery - Implementation Methodologies
- o Project Delivery - Partner Engagement Models
- o Project Delivery - SaaS Governance
- o TAFJ Implementation
- o Technical Concepts
- o Technical Essentials
- o Workbench Advanced

R21

- o Architecture Overview
- o Browser Navigation
- o Extensibility for Java
- o Implementation Methodology - Transact
- o Installation
- o Programming Components
- o Programming Foundation
- o Programming Routines
- o Programming Templates

R20

- o Security Management System
- o T AFC-TAFJ Migration
- o TAFJ Foundation
- o TAFJ Implementation
- o Technical Concepts
- o Technical Essentials
- o Workbench Advanced
- o Architecture Overview
- o Extensibility for Java
- o Programming Foundation
- o Programming Routines
- o Programming Templates
- o System Management
- o T AFC-TAFJ Migration
- o TAFJ Foundation
- o TAFJ Implementation
- o Technical Concepts
- o Updates and Upgrade

R19

- o Administration
- o Browser Navigation
- o Customisation
- o Programming Foundation
- o Programming Routines
- o Programming Templates
- o Security Management System
- o TAFJ (Temenos Application Framework Java)
- o Technical Concepts
- o Updates and Upgrade

Annual Cost \$800.00

Project Manager

Courses Available: 59



R22

- o AA Deposits Foundation Part 1
- o AA Retail Accounts Foundation Part 1
- o AC Accounts Foundation
- o Browser Navigation
- o Customer Foundation Part 1
- o Essentials
- o Financial Accounting and Reporting Foundation
- o Global Accounting Foundation
- o Implementation Methodology - Transact
- o Limits Foundation Part 1
- o Payment Hub Foundation Part 1
- o Product Introduction - Business
- o Project Delivery - Basics
- o Project Delivery - Commercial Basics
- o Project Delivery - Implementation Methodologies
- o Project Delivery - Partner Engagement Models
- o Project Delivery - SaaS Governance
- o Technologies Induction
- o Temenos Transact Overview
- o WealthSuite Overview
- o WealthSuite Overview

R21

- o AA Deposits Foundation Part 1
- o AA Lending Foundation Part 1
- o AA Retail Accounts Foundation Part 1
- o AC Accounts Foundation
- o Browser Navigation
- o Customer Foundation Part 1
- o Essentials
- o Financial Accounting and

R20

- Reporting Foundation
- o Global Accounting Foundation
- o Implementation Methodology - Transact
- o Limits Foundation Part 1
- o Payment Hub Foundation Part 1
- o Product Introduction - Business
- o Product Introduction - Business
- o Products Induction
- o WealthSuite Overview
- o AA Deposits Foundation Part 1
- o AA Lending Foundation Part 1
- o AA Retail Accounts Foundation Part 1
- o AC Accounts Foundation
- o Essentials
- o Financial Accounting and Reporting Foundation
- o Global Accounting Foundation
- o Limits Foundation Part 1
- o Payment Hub Foundation Part 1
- o Product Introduction - Business
- o Products Induction
- o Technologies Induction
- o WealthSuite Overview

R19

- o AA Deposits Foundation Part 1
- o AA Lending Foundation Part 1
- o AA Retail Accounts Foundation Part 1
- o AC Accounts Foundation
- o Browser Navigation
- o Customer Foundation Part 1
- o Financial Accounting and Reporting Foundation
- o Limits Foundation Part 1
- o Product Introduction - Business

Annual Cost \$800.00



© 2023 Temenos Headquarters SA — All Rights Reserved.

Warning: This document is protected by copyright law and international treaties. Unauthorised reproduction of this document, or any portion of it, may result in severe and criminal penalties, and will be prosecuted to the maximum extent possible under law.

temenos