

# TLC ONLINE

## Learning Pack Content

When you become a TLC Online member for just \$200.00 p.a. you will have access to the TLC Online platform where you can manage your digital profile and interact with our other members. But most importantly it provides you with the opportunity to purchase one or more of our learning packs, listed below, providing one year of unlimited, 24x7 access to upskill, train, test and certify yourself in the specialist areas that matter to you and your organisation. Migration and Upgrade Learning Packs are reserved to Temenos Certified Services Partners and can be bought only after the approval of the relevant partner manager. This document outlines what each pack contains.

### TRANSACT – CORE BANKING



**Courses: 392**

### WEALTH MANAGEMENT



**Courses: 180**

### PAYMENTS



**Courses: 45**

### FUND ADMINISTRATION



**Courses: 66**

### ANALYTICS



**Courses: 47**

### FINANCIAL CRIME MITIGATION



**Courses: 10**

### INFINITY – DIGITAL FRONT OFFICE



**Courses: 75**

### TRANSACT – MIGRATION



**Courses: 87**

### TRANSACT – UPGRADE



**Courses: 29**

### PREMIUM PACK



**Courses: 600+**

### TLC ENGINE LITE




**Standard Model Bank**



**TEMENOS**  
Learning Community

# TLC ONLINE LEARNING PACK COST SCENARIOS

Annual membership fee	 \$200	 \$200	 \$200	 \$200	 \$200	 \$200
You access	TLC ONLINE GLOBAL COMMUNITY AND PLATFORM					
Choose additional pack/s		 band C \$600	 band B \$1200	 band B \$1200  band C \$600	 band A \$1800	 band A \$1800  Engine-Life \$1200
You pay	<b>\$200</b> Member	<b>\$800</b> Specialist	<b>\$1400</b> Specialist	<b>\$2000</b> Specialist	<b>\$2000</b> Premium	<b>\$3200</b> Premium + Engine-Life

## NEXT STEPS

### NEW TO TLC ONLINE?

To access and pay for any of our Learning packs, you must first have a valid membership. If you are not currently a member, and would like to join, either request an invitation at <https://tlc.temenos.com/signup> fill in the form, and our team will contact you with instructions on how to pay your membership fee by credit card. Or, speak to your company's training representative to organise payment via invoice.

Once the payment has been processed and you have activated your membership, you will be able to log into the platform and visit the Memberships page, from where you can review and purchase our learning packs.

For more information please contact: [tlcenquiries@temenos.com](mailto:tlcenquiries@temenos.com)

# Pathways

## by Learning Pack

	<i>Time (# days)</i>	<i>Items (# courses)</i>	<i>Points (# credits)</i>	<i>Premium Pack</i>	<i>Transact - Core Banking</i>	<i>Transact - Migration</i>	<i>Transact - Upgrade</i>	<i>Payments</i>	<i>Wealth Management</i>	<i>Fund Administration</i>	<i>Analytics</i>	<i>Financial Crime Mitigation</i>	<i>Infinity - Digital Front Office</i>
Banking Infrastructure Functional Associate	4	8	0	✓	✓								
Banking Infrastructure Functional Consultant	7	10	300	✓	✓								
Corporate Banking Functional Consultant	11	11	340	✓	✓								
Financial Inclusion Functional Consultant	3	5	120	✓	✓								
Islamic Banking Functional Consultant	9	16	160	✓	✓								
Retail Banking Functional Associate	4	8	80	✓	✓								
Retail Banking Functional Consultant	6	7	120	✓	✓								
Retail Banking Services Functional Consultant	8	13	180	✓	✓								
Transact Configuration Consultant	4	7	120	✓	✓								
Transact Functional Associate	3	7	0	✓	✓								
Transact Process and Messaging Consultant	2	3	60	✓	✓								
Treasury Functional Consultant	6	7	180	✓	✓								
Transact Data Migration Consultant	5	6	40	✓	✓	✓							
Transact Design Consultant	6	7	20	✓	✓	✓							
Transact Integration Consultant	7	9	80	✓	✓	✓							

# Pathways

## by Learning Pack

	<i>Time (# days)</i>	<i>Items (# courses)</i>	<i>Points (# credits)</i>	<i>Premium Pack</i>	<i>Transact - Core Banking</i>	<i>Transact - Migration</i>	<i>Transact - Upgrade</i>	<i>Payments</i>	<i>Wealth Management</i>	<i>Fund Administration</i>	<i>Analytics</i>	<i>Financial Crime Mitigation</i>	<i>Infinity - Digital Front Office</i>
Transact Technical Associate	17	19	140	✓	✓	✓							
Transact Technical Consultant	5	6	100	✓	✓	✓							
Transact Upgrade Consultant	5	6	40	✓	✓	✓	✓						
Transact Development Consultant	4	4	20	✓	✓		✓						
Payments Functional Associate	8	10	120	✓	✓			✓					
Payments Functional Consultant	8	8	0	✓	✓			✓					
Wealth Management Core Banking Functional Consultant	6	8	40	✓	✓				✓				
Wealth Management Data Source Consultant	1	2	0	✓					✓				
Wealth Management Front Office Functional Associate	3	5	100	✓					✓				
Wealth Management Front Office Functional Consultant	6	9	140	✓					✓				
Wealth Management Front Office Technical Consultant	9	11	0	✓					✓				
Wealth Management Integration Associate	1	2	0	✓					✓				
Wealth Management Integration Functional Consultant	2	4	0	✓					✓				
Wealth Management Integration Technical Consultant	1	1	0	✓					✓				
Multifonds Global Accounting (MFGA) Functional Consultant	4	9	100	✓						✓			

# Pathways

## by Learning Pack

	<i>Time (# days)</i>	<i>Items (# courses)</i>	<i>Points (# credits)</i>	<i>Premium Pack</i>	<i>Transact - Core Banking</i>	<i>Transact - Migration</i>	<i>Transact - Upgrade</i>	<i>Payments</i>	<i>Wealth Management</i>	<i>Fund Administration</i>	<i>Analytics</i>	<i>Financial Crime Mitigation</i>	<i>Infinity - Digital Front Office</i>
Multifonds Global Investment (MFGI) Functional Consultant	5	10	180	✓						✓			
Multifonds Technical Consultant	2	4	20	✓						✓			
Analytics Business Intelligence Functional Consultant	3	6	20	✓							✓		
Analytics Business Intelligence Technical Consultant	4	7	40	✓							✓		
Financial Crime Mitigation Functional Consultant	4	2	40	✓								✓	
Financial Crime Mitigation Technical Consultant	2	2	0	✓								✓	
Full Stack Journey Platform Developer	6	7	0	✓									✓
Infinity Application Designer	1	10	60	✓									✓
Infinity Application Developer	1	19	80	✓									✓
Multiexperience Development Platform Developer	4	5	0	✓									✓
UXP Consultant	9	9	80	✓									✓
Temenos Induction	1	2	0										
TLC Engine Consultant	1	1	0										

# Certification

## by Learning Pack

	Code	Credits	Premium Pack	Transact - Core Banking	Transact - Migration	Transact - Upgrade	Payments	Wealth Management	Fund Administration	Analytics	Financial Crime Mitigation	Infinity - Digital Front Office
FATCA	T3TFA	20	✓									
IFRS (International Financial Reporting Standards)	T3TIA	20	✓									
Insight Risk (ALM)	T3TIRALM	20	✓									
Insight Risk (Market Risk)	T3TIRMR	20	✓									
Insight Risk (Regulatory Capital)	T3TIRRC	40	✓									
AA Based	T3ISAAT24	20	✓	✓								
Arrangement Architecture Accounts	T3TAAR	40	✓	✓								
Arrangement Architecture Agency Commission	T3TAAAG	20	✓	✓								
Arrangement Architecture Deposits	T3TAAD	40	✓	✓								
Arrangement Architecture Loans	T3TAAL	40	✓	✓								
Arrangement Architecture Rewards	T3RW	20	✓	✓								
Balance Netting	T3TBN	40	✓	✓								
Business Events Management	T3TBE	20	✓	✓								
Cash Pooling (Liquidity Management)	T3TPO	20	✓	✓								
Channels - ARC Internet Banking	T3ARCIB	40	✓	✓								

# Certification

## by Learning Pack

	Code	Credits	Premium Pack	Transact - Core Banking	Transact - Migration	Transact - Upgrade	Payments	Wealth Management	Fund Administration	Analytics	Financial Crime Mitigation	Infinity - Digital Front Office
Channels - ARC Mobile Banking	T3ARCMB	40	✓	✓								
Close Of Business Management	T3TCM	40	✓	✓								
Collateral	T3TCO	40	✓	✓								
Collection	T3TCL	20	✓	✓								
Common Reporting Standard	T3CRS	20	✓	✓								
Connectors	T3TC	40	✓	✓								
Core - Induction Business	T1ESL-2-B	20	✓	✓								
Core - Induction Technical	T1ESL-1-T	20	✓	✓								
Corporate Lending	T3TAACL	40	✓	✓								
Customer Data Protection and Consent Management	T3TCDP	20	✓	✓								
Data Migration	T3DMG	80	✓	✓								
Derivatives	T3TDX	40	✓	✓								
Event Framework - Inflow	T3FL	20	✓	✓								
External BPM	T3BPM	20	✓	✓								
Factoring and Forfaiting (Bills)	T3TBL	20	✓	✓								

# Certification

## by Learning Pack

	Code	Credits	Premium Pack	Transact - Core Banking	Transact - Migration	Transact - Upgrade	Payments	Wealth Management	Fund Administration	Analytics	Financial Crime Mitigation	Infinity - Digital Front Office
Fiduciary	T3TFD	20	✓	✓								
Financial Inclusion Business	T3FIBU	20	✓	✓								
Financial Inclusion Utilities	T3FIUT	20	✓	✓								
Financial Reporting	T3TRE	40	✓	✓								
Forex	T3TFX	40	✓	✓								
Forward Rate Agreements	T3TFR	20	✓	✓								
Front Office Asset Management	T3TAM	40	✓	✓								
Front Office Delivery	T3DEL	40	✓	✓								
Front Office Document Management	T3DM	20	✓	✓								
Front Office Securities Administration and Trading - Advanced	T3TSCTA	40	✓	✓								
Front Office Securities Administration and Trading - Basic	T3TSCTB	40	✓	✓								
Inclusive Banking Suite Business	T3IBSBU	60	✓	✓								
Inclusive Banking Suite Utilities	T3IBSUT	20	✓	✓								
Interaction Data Services	T3DSD	20	✓	✓								



# Certification

## by Learning Pack

	Code	Credits	Premium Pack	Transact - Core Banking	Transact - Migration	Transact - Upgrade	Payments	Wealth Management	Fund Administration	Analytics	Financial Crime Mitigation	Infinity - Digital Front Office
Interest Taxes and Charges	T3TIC	40	✓	✓								
iBASE	T3JB	40	✓	✓								
LD Based	T3ISLDT24	40	✓	✓								
Letters of Credit (Trade Finance)	T3TLC	80	✓	✓								
Loans and Deposits	T3TLD	40	✓	✓								
Miscellaneous Deals	T3TMD	40	✓	✓								
Money Market	T3TMM	40	✓	✓								
Multi Company - Multi-Book	T3TMC	20	✓	✓								
Mutual Funds	T3TMF	40	✓	✓								
Past Dues	T3TPD	40	✓	✓								
Position Management	T3TPM	20	✓	✓								
Process Workflow	T3PW	40	✓	✓								
Relational Replication	T3RR	40	✓	✓								
Repos	T3TRP	40	✓	✓								
Retail Sweeping	T3TRS	20	✓	✓								

# Certification

## by Learning Pack

	Code	Credits	Premium Pack	Transact - Core Banking	Transact - Migration	Transact - Upgrade	Payments	Wealth Management	Fund Administration	Analytics	Financial Crime Mitigation	Infinity - Digital Front Office
Structured Products	T3TSY	40	✓	✓								
Swaps	T3TSW	20	✓	✓								
Syndicated Loans	T3TSL	40	✓	✓								
Temenos Transact Packaging with Temenos Packager	T3TTP	20	✓	✓								
tOP Enterprise Monitoring	T3iOP	20	✓	✓								
Universal Performance Metrics	T3UPM	20	✓	✓								
Arrangement Architecture Core	T3AAC	40	✓	✓	✓							
Arrangement Architecture Core - Technical	T3AACT	20	✓	✓	✓							
Multi-Tenancy	T3MT	20	✓	✓	✓							
Open Financial Service	T3OFS	40	✓	✓	✓							
Web Services	T3TWS	20	✓	✓	✓							
Administration	T3TAD	40	✓	✓	✓	✓						
Customisation	T3CUS	80	✓	✓	✓	✓						
Extensibility for Java	T3TECJ	20	✓	✓	✓	✓						
Oracle Administration and Performance Tuning	T3ORA	40	✓	✓	✓	✓						

# Certification

## by Learning Pack

	Code	Credits	Premium Pack	Transact - Core Banking	Transact - Migration	Transact - Upgrade	Payments	Wealth Management	Fund Administration	Analytics	Financial Crime Mitigation	Infinity - Digital Front Office
Programming	T3PRG	80	✓	✓	✓	✓						
Security Management System	T3SMS	40	✓	✓	✓	✓						
TAFJ	T3TAFJ	40	✓	✓	✓	✓						
TAFJ Integration Framework	T3TIF	20	✓	✓	✓	✓						
Temenos Open Connectivity Framework (TAFC)	T3TOCF(EF)	20	✓	✓	✓	✓						
Upgrade	T3UPG	40	✓	✓	✓	✓						
Cheque and Draft Issue Management	T3TCI	20	✓	✓			✓					
Direct Debits	T3TDD	20	✓	✓			✓					
Funds Transfer	T3TFT	40	✓	✓			✓					
Payment Order Preliminary	T3TPI	40	✓	✓			✓					
Teller	T3TTT	40	✓	✓			✓					
Temenos Payments Hub	T3TPH	40	✓	✓			✓					
Temenos Payments Hub - Standalone System	T3STAL	20	✓	✓			✓					
Core - Customer Relationship Management	T3CRM	40	✓	✓				✓				
Core Accounts	T3TAC	40	✓	✓				✓				

# Certification

## by Learning Pack

	Code	Credits	Premium Pack	Transact - Core Banking	Transact - Migration	Transact - Upgrade	Payments	Wealth Management	Fund Administration	Analytics	Financial Crime Mitigation	Infinity - Digital Front Office
Design Studio for Core Change Management	T3DST24	20	✓	✓				✓				
Financial Accounting	T3TFI	80	✓	✓				✓				
Limits	T3TLI	40	✓	✓				✓				
Securities Back Office - Advanced	T3TSCBA	40	✓	✓				✓				
Securities Back Office - Basic	T3TSCBB	40	✓	✓				✓				
Securities Back Office - Corporate Actions	T3TSCCA	40	✓	✓				✓				
Channels Digital Engagement	T3DE	40	✓					✓				
Channels PM Advisory	CH1PMADV	20	✓					✓				
Channels PM B2F	CH1PMB2F	20	✓					✓				
Channels PM F2B	CH1PMF2B	20	✓					✓				
Front Office PM Advanced Performance Analysis Attribution	FO2PMPAA	20	✓					✓				
Front Office PM Advanced Performance Analysis Standard	FO2PMPAS	20	✓					✓				
Front Office PM Constraints Management	FO2PMACM	20	✓					✓				
Front Office PM Data Administration and Securities	FO2PMDAS	20	✓					✓				

# Certification

## by Learning Pack

	Code	Credits	Premium Pack	Transact - Core Banking	Transact - Migration	Transact - Upgrade	Payments	Wealth Management	Fund Administration	Analytics	Financial Crime Mitigation	Infinity - Digital Front Office
Front Office PM Operations and Positions	FO2PMOPP	20	✓					✓				
Front Office PM Order Management	FO2PMOMT	20	✓					✓				
Front Office PM Portfolio Strategies	FO2PMPFS	20	✓					✓				
Front Office Scripts and Formats	FO2PMSCF	20	✓					✓				
Internet Banking Retail	T3IBR	40	✓					✓				
Internet Banking Retail Functional	T3IBRF	20	✓					✓				
Wealth Reporting	T3TWR	20	✓					✓				
WealthSuite Overview	FO1WSOVE	20	✓					✓				
Global Accounting Advanced Core 1	FSFGAAC1	20	✓						✓			
Global Accounting Advanced Core 2	FSFGAAC2	20	✓						✓			
Global Accounting Basics	FSFGAB	40	✓						✓			
Global Accounting Data Mart and Investment Book Of Records (IBOR) Foundation	FSFGADM	20	✓						✓			
Global Accounting Workflow and Exception Monitor (WEM)	FSFGAWEM	20	✓						✓			
Global Investor Anti Dilution Levy (ADL)	FSFGIADL	20	✓						✓			

# Certification

## by Learning Pack

	Code	Credits	Premium Pack	Transact - Core Banking	Transact - Migration	Transact - Upgrade	Payments	Wealth Management	Fund Administration	Analytics	Financial Crime Mitigation	Infinity - Digital Front Office
Global Investor Anti-Money Laundering (AML)	FSFAML	20	✓						✓			
Global Investor Contingent Deferred Sales Charge (CDSC)	FSFGCDSC	20	✓						✓			
Global Investor Data Mart	FSFGIDM	20	✓						✓			
Global Investor Foreign Account Tax Compliance Act (FATCA) and Common Reporting Standard (CRS)	FSFFATC	20	✓						✓			
Global Investor General Ledger	FSFGIGL	20	✓						✓			
Global Investor Receipts	FSFGIRCPT	20	✓						✓			
Global Investor Taxes	FSFGITAX	20	✓						✓			
Identity and Access Management - Single Sign On	FSTISSO	20	✓						✓			
Identity and Access Management - User Access Management	FSTIUAM	20	✓						✓			
MFGA Migration Module	FSFGAMIG	20	✓						✓			
Migration Tool	FSTMIG	20	✓						✓			
Performance Engineering	FSTPERF	20	✓						✓			
PLSQL Forms and Reports Best Practices	FSTPLS	20	✓						✓			
Product Global Investor Basic	FSFGIB	20	✓						✓			

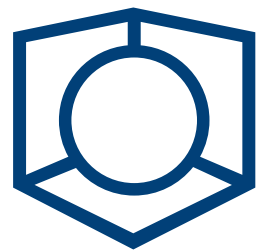
# Certification

## by Learning Pack

	Code	Credits	Premium Pack	Transact - Core Banking	Transact - Migration	Transact - Upgrade	Payments	Wealth Management	Fund Administration	Analytics	Financial Crime Mitigation	Infinity - Digital Front Office
SQL Technical	FSTSQL	20	✓						✓			
WEM Technical	FSTWEM	20	✓						✓			
Workflow and Exception Monitor (WEM) Pricing	FSFGIWEM	20	✓						✓			
Business Analytics	T3TAB	20	✓							✓		
Technical Analytics	T3TAT	40	✓							✓		
Temenos Data Lake - Temenos Data Engineering	T3TDE	40	✓							✓		
Temenos Data Lake Overview	T3TDLO	20	✓							✓		
Financial Crime Mitigation Business	T3FCM	40	✓								✓	
Infinity Branch Banking	T3INBB	20	✓									✓
Infinity Essentials Functional	T3INESF	20	✓									✓
Infinity Essentials Technical	T3INEST	20	✓									✓
Infinity Retail Banking Functional	T3INRBF	20	✓									✓
UXP Temenos UXP	T3UXP	40	✓									✓
Temenos Implementation Methodology	T3TIM	40	✓	✓	✓	✓	✓	✓	✓	✓	✓	✓

# TRANSACT – CORE BANKING

## COURSES AVAILABLE: 392



### R21

- AA Retail Accounts Foundation Part 2
- AA Safe Deposit Box Implementation
- AC Accounts Foundation
- Balance Netting Implementation
- Browser Navigation
- Business Events Management
- Cheque Collection Implementation
- Cloud Data Migration
- Cloud Deployment
- Confirmation Matching Implementation
- Corporate Actions
- Corporate Lending Implementation Part 2
- Customer Foundation Part 1
- Customer Foundation Part 2
- Data Framework Relational Replication
- Design Studio DSF Rules Designer
- Design Studio Enquiry Designer
- Design Studio IRIS RIM Importer
- Design Studio Screen Designer
- DSF Packager Foundation
- Factoring and Forfaiting (Bills) Implementation
- Financial Accounting and Reporting Foundation
- Financial Accounting Implementation Part 1
- Financial Accounting Implementation Part 2
- Financial Inclusion Foundation
- Financial Reporting Implementation
- Forward Rate Agreements Implementation (FRA)
- Initiation Implementation
- Interest, Taxes and Charges Foundation
- Interest, Taxes and Charges Implementation
- Islamic Finance Bai Salam Implementation
- Islamic Finance Diminishing Musharaka Implementation
- Islamic Finance Ijara Implementation
- Islamic Finance Qard Hasan Implementation
- Islamic Finance Wakala Musawama Implementation
- Kubernetes on Azure Cloud
- Kubernetes on Google Cloud
- Limits Foundation Part 1
- Limits Foundation Part 3
- Loans and Deposits
- Microservices and Transact on AWS Cloud
- Microservices Foundation
- Model Bank On Dockers
- Mule Adapter
- Multi-Company - Multi-Book Implementation
- Origination Architecture Basic Implementation
- Payment Financial Crime and SaaS Delta Q2-2021
- Past Dues Implementation
- Post Closing Implementation
- Products Induction
- Profit Distribution System Implementation
- PSD2 Account Information Implementation
- PSD2 Payments Implementation
- SaaS 2.0 Essentials
- Securities Administration
- Securities Administration and Trading
- Securities Back Office Foundation
- Syndicated Loans Implementation
- TAFC-TAFJ Migration
- Technical Concepts
- Temenos Advanced Collection (TAC)
- Temenos Cloud Induction
- Temenos Implementation Methodology Cloud
- Transact Development And Operations Delta Q2-2021
- Transact Development And Operations Delta Q3-2021
- Transact Functional 1 Delta Q2-2021
- Transact Functional 2 Delta Q2-2021
- Transact Functional 2 Delta Q3-2021
- Treasury Front Office Implementation
- UKMB BBSI Reporting
- UKMB Financial Services Compensation Scheme (FSCS)
- UKMB FSCS Continuity of Access
- UKMB Return Direct Credit
- UKMB Static Data
- Workbench Foundation
- Workbench Installation



## R20

- AA Common Building Blocks Implementation
- AA Deposits Foundation Part 1
- AA Deposits Foundation Part 2
- AA Implementation
- AA Lending Foundation Part 1
- AA Lending Foundation Part 2
- AA Lending Product Building Implementation
- AA Deposits Product Building Implementation
- AA Retail Accounts Foundation Part 1
- AA Retail Accounts Foundation Part 2
- AA Rewards Implementation
- AA Technical Customisation
- AA Technical Integration
- AA Technical Overview
- AA Technical Programming
- AC Accounts Foundation
- AC Accounts Implementation
- Architecture Overview
- Balance Netting Implementation
- Cash Pooling Implementation
- Cheque and Draft Management Foundation
- Cheque and Draft Management Implementation
- Clearing Framework
- Clearing Implementation
- Close Of Business Management Foundation
- Close Of Business Management Global Processing
- Close Of Business Management Implementation
- Collateral Foundation Part 1
- Collateral Foundation Part 2
- Collateral Implementation
- Collections Implementation
- Common Reporting Standards Implementation
- Corporate Actions
- Corporate Lending Implementation
- Customer Data Protection Implementation
- Data Event Streaming (DES)
- Derivatives Administration
- Design Studio Advanced Adaptation
- Design Studio Data Eson Designer
- Design Studio DSF Packager
- Design Studio DSF Rules Designer
- Design Studio Enquiry Designer
- Design Studio Foundation
- Design Studio IRIS Foundation
- Design Studio IRIS Security
- Design Studio IRIS Published API
- Design Studio Process Workflow Designer
- Design Studio Screen Designer
- Design Studio Temenos Workbench Foundation
- Essentials
- Extensibility for Java
- Financial Accounting and Reporting Foundation
- Financial Accounting Implementation
- Financial Reporting Implementation
- Funds Transfer
- IIB Custom Adapter
- Instant Payments Implementation
- Integration Framework Inflow Foundation
- Integration Framework Inflow Implementation
- Integration Framework Inflow PW Implementation
- Integration Framework Overview
- Interest, Taxes and Charges Foundation
- Interest, Taxes and Charges Implementation
- Letters of Credit Implementation
- Limits Foundation Part 1
- Limits Foundation Part 2
- Limits Implementation
- Local Clearing Implementation
- Microservices Advanced Concepts Implementation
- Microservices Creating a Microservice Implementation
- Microservices Foundation
- Miscellaneous Deals Implementation
- Multi-Company - Multi-Book
- Temenos eXplainable Artificial Intelligence (XAI)
- Payment Hub Foundation - Part 1
- Payment Hub Foundation - Part 2
- Payment Hub Implementation
- Payment Initiation Implementation
- Products Induction
- Programming Foundation
- Programming Routines
- Programming Templates
- Provisioning Implementation
- Profit Distribution System Implementation
- Repair Designer
- Securities Administration
- Securities Administration and Trading
- Securities Back Office Foundation

- Securities Back Office Implementation
- Securities Foundation
- Settlements on Securities
- System Management
- SWIFT GPI
- T24 Securities Trading and Management
- TAFC-TAFJ Migration
- TAFJ Foundation
- Technical Concepts
- Technologies Induction
- Updates and Upgrade

## R19

- AA Account Product Building Implementation
- AA Agent Commission Implementation
- AA Common Building Blocks Implementation
- AA Deposits Foundation Part 1
- AA Deposits Foundation Part 2
- AA Deposits Product Building Implementation
- AA External Product Implementation
- AA Implementation
- AA Lending Foundation Part 1
- AA Lending Foundation Part 2
- AA Lending Product Building Implementation
- AA Retail Accounts Foundation Part 1
- AA Retail Accounts Foundation Part 2
- AA Rewards Implementation
- AA Safe Deposit Box Implementation
- AC Accounts Foundation
- Administration
- Balance Netting Implementation
- Browser Navigation
- Cheque and Draft Management Implementation
- Clearing Implementation
- Close Of Business Management
- Collateral Foundation Part 1
- Collateral Foundation Part 2
- Collateral Implementation
- Common Reporting Standards Implementation
- Confirmation Matching Implementation
- Consent Management Implementation
- Customer Data Protection Implementation
- Customer Foundation Part 1
- Customisation
- Data Framework Relational Replication

- Data Life Cycle Management
- Design Studio Advanced Adaptation
- Design Studio Data Eson Designer
- Design Studio Enquiry Designer
- Design Studio Foundation
- Design Studio Integration Framework Designer
- Design Studio IRIS Event Processing
- Design Studio IRIS Foundation
- Design Studio IRIS Publishing API
- Design Studio IRIS RIM Importer
- Design Studio IRIS Security
- Design Studio Process Workflow Designer
- Design Studio SCM Integration
- Design Studio Screen Designer
- Design Studio T24 Extensibility for Java
- Essentials
- Factoring and Forfeiting (Bills) Implementation
- Financial Accounting and Reporting Foundation
- Financial Accounting Implementation
- Financial Reporting Implementation
- FO Customer Relationship Manager
- Forex
- Forward Rate Agreements Implementation (FRA)
- IIB Custom Adapter
- Integration Framework Runtime
- Interest, Taxes and Charges Foundation
- Interest, Taxes and Charges Implementation
- Letters of Credit Implementation
- Limits Foundation Part 1
- Limits Foundation Part 2
- Loans and Deposits
- Local Clearing Implementation
- Miscellaneous Deals Implementation
- Money Market
- Mule Adapter
- Multi-Company - Multi-Book
- Nostro Reconciliation Implementation
- Open Financial Service
- Origination Architecture Basic Implementation
- Packaging and Deployment Utilities
- Past Dues Implementation
- Position Management Implementation
- Post Closing Implementation
- Programming Foundation
- Programming Routines
- Programming Templates
- Provisioning Implementation
- Security Management System
- Swaps Implementation

- Syndicated Loans Implementation
- TAFJ (Temenos Application Framework Java)
- Technical Concepts
- Transaction Cyler Implementation
- Treasury Front Office Implementation
- Updates and Upgrade
- Web Services
- Islamic Banking Concepts
- Islamic Finance Bai Salam Implementation
- Islamic Finance Commodity Murabaha Implementation
- Islamic Finance Diminishing Musharaka Implementation
- Islamic Finance Ijara Implementation
- Islamic Finance Murabaha Implementation
- Islamic Finance Qard Hasan Implementation
- Islamic Finance Wakala Musawama Implementation
- Islamic Finance Workflow
- Profit Distribution System Implementation
- Cheque Collection
- Clearing Framework
- Direct Debits
- Expected Receipts Implementation
- Funds Transfer
- Instant Payments Implementation
- Payment Hub Implementation
- Payment Initiation Implementation
- Standalone Payment Hub
- Teller Foundation Part 1
- Teller Foundation Part 2
- Teller Implementation

## R18

- AA Common Building Blocks Implementation
- AA Deposits Foundation Part 1
- AA Deposits Foundation Part 2
- AA Implementation
- AA Loans Foundation Part 1
- AA Loans Foundation Part 2
- AA Retail Accounts Foundation Part 1
- AA Retail Accounts Foundation Part 2
- AA Safe Deposit Box Implementation
- AA Technical Customisation
- AA Technical Integration
- AA Technical Overview
- AA Technical Programming
- AC Accounts Foundation
- Architecture
- Arrangement Architecture Agent
- Arrangement Architecture Core
- Arrangement Architecture Core - Technical
- Arrangement Architecture Relationship Pricing
- Arrangement Architecture Rewards
- Bills
- Browser Navigation
- Business Events Management
- Cash Pooling (Liquidity Management)
- Cheque and Draft Management Foundation
- COB Management
- Collateral Foundation Part 1
- Collateral Foundation Part 2
- Collateral Implementation
- Collections Implementation
- Common Reporting Standard
- Consent Management Implementation
- Customer Data Protection Implementation
- Customer Foundation Part 1
- Customer Foundation Part 2
- Design Studio for Core Change Management
- Essentials
- Essentials of Core Banking Programming
- Financial Accounting and Reporting Foundation
- Financial Reporting
- FO Document Management
- Installation
- Interaction Framework IRIS
- Letters of Credit (Trade Finance)
- Limits Foundation Part 1
- Limits Foundation Part 2
- Limits Implementation
- Multi-Company / Multi-Book
- Open Financial Service
- Past Dues
- Process Workflow
- Provisioning
- PSD2 Account Information
- Retail Sweeping
- Securities Foundation
- Syndicated Loans
- System Management
- Temenos Core Banking Overview
- Temenos Implementation Methodology Core Banking
- Direct Debits
- Funds Transfer
- Instant Payments
- Payment Initiation

- PSD2 Payments
- Teller Foundation Part 1
- Teller Implementation
- Temenos Payment Hub
- Understanding Teller Advanced
- CAMB AA Deposits
- CAMB AA Loans
- CAMB AA Product Builder
- CAMB AA Retail Accounts Foundation
- CAMB Collateral
- CAMB Core Banking Overview
- CAMB Customer Foundation
- CAMB Limits
- CAMB Navigation
- CAMB Payments and Clearing
- CAMB Security Management System (SMS)
- USMB AA Deposits
- USMB AA Product Builder
- USMB AA Retail Accounts Advanced
- USMB AA Retail Accounts Foundation
- USMB AA Safe Deposit Box
- USMB Account Analysis Advanced
- USMB Account Analysis Foundation
- USMB Automated Clearing House Payments
- USMB Bundling
- USMB Cash Pooling

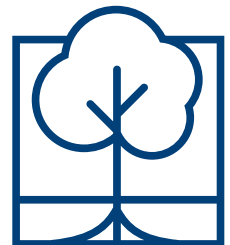
- USMB Funds Transfer
- USMB General Ledger
- USMB Individual Retirement Accounts
- USMB Loan Development
- USMB Navigation
- USMB Non Sufficient Funds
- USMB Platform Parameters
- USMB Regulations
- USMB Relationship Pricing
- UXP Advanced Essentials
- UXP Application Installation
- UXP Enterprise Platform
- UXP Enterprise Team
- UXP Foundation Devices
- UXP Foundation Essentials with Hybrid Apps
- UXP Foundation Live CMS
- UXP Foundation Tables and Charts
- UXP Foundation Temenos Theme

PRICE BAND B: \$1,200.00 pa

ANNUAL COST WITH  
MEMBERSHIP.

**\$1,400.00**

## WEALTH MANAGEMENT COURSES AVAILABLE: 180



### R21

- AA Retail Accounts Foundation Part 2
- AC Accounts Foundation
- CH IB Retail Essentials for Administration
- CH IB Retail Essentials for Business
- CH Real Time Engagement (Digital Engagement)
- Corporate Actions
- Customer Foundation Part 1
- Customer Foundation Part 2
- Design Studio DSF Rules Designer
- Design Studio Enquiry Designer
- Design Studio IRIS RIM Importer
- Design Studio Screen Designer
- DSF Packager Foundation
- Financial Accounting and Reporting Foundation
- Financial Accounting Implementation Part 1
- Financial Accounting Implementation Part 2
- FO PM Architecture
- FO PM Data Administration and Security Overview
- FO PM Design Studio Odata API
- FO PM Installation (Oracle)
- FO PM IPO Subscription
- FO PM Monitoring and Performance
- FO PM Operations and Positions
- FO PM Order Management
- FO PM Portfolio Strategies
- FO PM Questionnaire
- FO PM Scripts and Formats

- FO PM System Management
- FO PM TSL Administration
- Fund Administration and Wealth Management Delta Q2-2021
- Fund Administration and Wealth Management Delta Q3-2021
- Limits Foundation Part 1
- Limits Foundation Part 3
- Products Induction
- Securities Administration and Trading
- Securities Back Office Foundation
- Transact Browser Navigation
- Transact Securities Administration
- Workbench Foundation
- Workbench Installation
- WS TTI Architecture
- WS TTI Cash and Securities
- WS TTI Client and Portfolio
- WS TTI Functional Concepts
- WS TTI Order Management

## R20

- AA Retail Accounts Foundation Part 1
- AA Retail Accounts Foundation Part 2
- AC Accounts Foundation
- AC Accounts Implementation
- CH PM B2F
- Core Banking Securities Foundation
- Core Banking Securities Administration
- Core Banking T24 Securities Trading and Management
- Core Banking Settlements on Securities
- Corporate Actions
- Design Studio Advanced Adaptation
- Design Studio Data Eson Designer
- Design Studio DSF Packager
- Design Studio DSF Rules Designer
- Design Studio Enquiry Designer
- Design Studio Foundation
- Design Studio IRIS Foundation
- Design Studio IRIS Published API
- Design Studio IRIS Security
- Design Studio Screen Designer
- Design Studio Temenos Workbench Foundation
- Financial Accounting and Reporting Foundation
- Financial Accounting Implementation
- FO PM Advisory
- FO PM B2F
- FO PM Data Administration and Security

## Overview

- FO PM F2B
- FO PM Operations and Positions
- FO PM Portfolio Strategies
- FO PM Scripts and Formats
- FO PM Questionnaire
- Limits Foundation Part 1
- Limits Foundation Part 2
- Limits Implementation
- Products Induction
- Securities Administration and Trading
- Securities Back Office Foundation
- Securities Back Office Implementation
- Technologies Induction
- WealthSuite Overview

## R19

- AA Retail Accounts Foundation Part 1
- AA Retail Accounts Foundation Part 2
- AC Accounts Foundation
- Browser Navigation
- CH PM Adaptation
- CH PM B2F
- Customer Foundation Part 1
- Design Studio Advanced Adaptation
- Design Studio Data Eson Designer
- Design Studio Enquiry Designer
- Design Studio Foundation
- Design Studio Integration Framework Designer
- Design Studio IRIS Event Processing
- Design Studio IRIS Foundation
- Design Studio IRIS Publishing API
- Design Studio IRIS RIM Importer
- Design Studio IRIS Security
- Design Studio Process Workflow Designer
- Design Studio SCM Integration
- Design Studio Screen Designer
- Design Studio T24 Extensibility for Java
- Datasource Architecture
- Datasource Installation
- Financial Accounting and Reporting Foundation
- FO Customer Relationship Manager
- FO PM Advanced Constraint Management
- FO PM Advanced Performance Analysis - Attribution
- FO PM Advanced Performance Analysis - Standard
- FO PM Design Studio Administration
- FO PM Design Studio Foundation
- FO PM Design Studio WUI Adaptation

- FO PM Design Studio WUI Processes
- FO PM IPO Subscription
- FO PM Operations and Positions
- FO PM Order Management
- FO PM Portfolio Strategies
- FO PM Questionnaire
- FO PM Reporting Adaptation
- FO PM Reporting Foundation
- FO PM Scripts and Formats
- Limits Foundation Part 1
- Limits Foundation Part 2
- WS TTI Foundation

## R18

- AA Retail Accounts Foundation Part 1
- AA Retail Accounts Foundation Part 2
- AC Accounts Foundation
- Browser Navigation
- Customer Foundation Part 1
- Customer Foundation Part 2
- Design Studio for Core Change Management
- Temenos Implementation Methodology Core Banking
- CH IB Retail Essentials for Administration
- CH IB Retail Essentials for Business
- CH IB Retail Essentials for Business and Administration
- CH PM Advisory
- CH PM B2F
- CH PM F2B
- CH Real Time Engagement (Digital Engagement)
- Core Banking Securities Foundation
- Financial Accounting and Reporting Foundation
- FO Delivery
- FO Document Management
- FO PM Advanced Constraint Management
- FO PM Advanced Performance Analysis - Attribution
- FO PM Advanced Performance Analysis -

## Standard

- FO PM Advisory
- FO PM Architecture
- FO PM B2F
- FO PM Data Administration and Security Overview
- FO PM Design Studio Administration
- FO PM Design Studio Foundation
- FO PM Design Studio Odata API
- FO PM Design Studio WUI Adaptation
- FO PM Design Studio WUI Processes
- FO PM F2B
- FO PM Installation (Oracle)
- FO PM Installation (Sybase)
- FO PM Monitoring and Performance
- FO PM Operations and Positions
- FO PM Order Management
- FO PM Portfolio Strategies
- FO PM Questionnaire
- FO PM Scripts and Formats
- FO PM System Management
- FO PM TSL Administration
- FO TTI Foundation
- Limits Foundation Part 2
- Limits Implementation
- Temenos Core Banking Overview
- WealthSuite Overview
- WS TTI Architecture
- WS TTI Cash and Securities
- WS TTI Client and Portfolio
- WS TTI Functional Concepts
- WS TTI Order Management

PRICE BAND B: \$ 1,200.00 pa

ANNUAL COST WITH  
MEMBERSHIP.  
**\$1,400.00**



## PAYMENTS

### COURSES AVAILABLE: 47

## R21

- Cheque Collection Implementation

- Initiation Implementation
- Payment Financial Crime and SaaS Delta Q2-



2021

- Products Induction
- PSD2 Account Information Implementation
- PSD2 Payments Implementation

## R20

- Cheque and Draft Management Foundation
- Cheque and Draft Management Implementation
- Clearing Framework
- Clearing Implementation
- Funds Transfer
- Instant Payments Implementation
- Local Clearing Implementation
- Payment Hub Foundation - Part 1
- Payment Hub Foundation - Part 2
- Payment Hub Implementation
- Payment Initiation Implementation
- Products Induction
- Repair Designer
- SWIFT GPI
- Technologies Induction

## R19

- Cheque and Draft Management Implementation
- Cheque Collection
- Clearing Framework
- Clearing Implementation
- Direct Debits
- Expected Receipts Implementation
- Funds Transfer

- Instant Payments Implementation
- Local Clearing Implementation
- Payment Hub Implementation
- Payment Initiation Implementation
- Standalone Payment Hub
- Teller Foundation Part 1
- Teller Foundation Part 2
- Teller Implementation

## R18

- Cheque and Draft Management Foundation
- Temenos Implementation Methodology Core Banking
- Direct Debits
- Funds Transfer
- Instant Payments
- Payment Initiation
- PSD2 Payments
- Teller Foundation Part 1
- Teller Implementation
- Temenos Payment Hub
- Understanding Teller Advanced

PRICE BAND C: \$600.00 pa

ANNUAL COST WITH  
MEMBERSHIP.

**\$800.00**

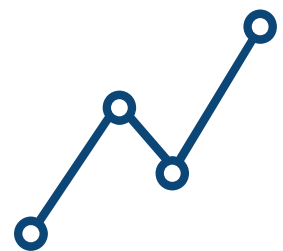
# FUND ADMINISTRATION

## COURSES AVAILABLE: 66

## R21

- Data Segregation and Data Masking
- Fund Administration and Wealth Management Delta Q2-2021
- Fund Administration and Wealth Management Delta Q3-2021
- Global Accounting Data Mart and Investment Book Of Records (IBOR) Foundation
- Global Investor Anti Dilution Levy (ADL)

- Global Investor Anti-Money Laundering (AML) Foundation
- Global Investor Contingent Deferred Sales Charge (CDSC)
- Global Investor Foreign Account Tax Compliance Act (FATCA) and Common Reporting Standard (CRS) Foundation
- Global Investor Foundation
- Global Investor General Ledger
- Global Investor Receipts
- Products Induction



- SQL Technical
- Technical Data Mart for Global Accounting
- Technical Data Mart for Global Investor
- Technical Performance Tuning for Global Accounting
- Technical Single Sign On (SSO)
- Workflow and Exception Monitor (WEM) Technical

## R20

- Data Segregation and Data Masking
- Global Accounting Data Mart and Investment Book Of Records (IBOR) Foundation
- Global Accounting Derivatives
- Global Accounting Equalisation
- Global Accounting Foundation
- Global Accounting Fund Pricing
- Global Accounting Fund Structure
- Global Accounting Implementation
- Global Accounting Valuation Method
- Global Accounting Workflow and Exception Monitor (WEM)
- Global Investor Anti Dilution Levy (ADL)
- Global Investor Anti-Money Laundering (AML) Foundation
- Global Investor Contingent Deferred Sales Charge (CDSC)
- Global Investor Data Mart Foundation
- Global Investor Foreign Account Tax Compliance Act (FATCA) and Common Reporting Standard (CRS) Foundation
- Global Investor Foundation
- Global Investor General Ledger
- Global Investor Receipts
- Global Investor Tax
- Global Investor Workflow and Exception Monitor (WEM)
- Products Induction
- Technical Data Mart for Global Accounting
- Technical Data Mart for Global Investor
- Technical Single Sign On (SSO)
- Technologies Induction

## R19

- Anti Dilution Levy (ADL) Points

- Automation Framework
- Coding Standards
- Contingent Deferred Sales Charge (CDSC)
- Data Mart in Multifonds Global Accounting (MFGA)
- Data Mart in Multifonds Global Investor (MFGI)
- Data Segregation and Data Masking
- Financial Market Basics
- General Ledger
- Guideline for SUP Database
- Induction Basic Multifonds Global Accounting (MFGA)
- Induction Basic Multifonds Global Investor (MFGI)
- Oracle Test Manager (OTM) and Oracle Functional Testing (OFT)
- Receipts
- Single Sign On (SSO) Architecture and Workflow
- SQL
- SQL and PL SQL Best Practices
- SVN
- Taxes
- Technical Support Basics Introduction
- Temenos Multifonds University (TMFU) Workflow and Exception Monitor (WEM)
- Users Screen

## R18

- Temenos Implementation Methodology Core Banking

PRICE BAND C: \$600.00 pa

ANNUAL COST WITH  
MEMBERSHIP.

**\$800.00**



# ANALYTICS

COURSES AVAILABLE: 50



## R21

- Application Navigation
- Introduction to Data Event Streaming (DES)
- Quick Reports
- Temenos Data Engineering and Navigation - Designer
- Temenos Data Engineering and Navigation - Scheduler
- Transact Data Hub Data Lake Dataflow and Configuration
- Products Induction

## R20

- Application Groups Data Relationship and Datasets
- Application KPI, Information Tiles and Dashboard
- Application Navigation
- Introduction to Data Event Streaming (DES)
- Products Induction
- Product Introduction - Business
- Quick Reports and Custom Reports
- Technologies Induction
- Temenos Data Engineering and Navigation - Administrator
- Temenos Data Engineering and Navigation - Deployer
- Temenos Data Engineering and Navigation - Designer
- Temenos Data Engineering Architecture in Transact Data Hub, Temenos Data Lake and Analytics
- Transact Data Hub, Temenos Data Lake and Temenos Analytics Overview

## R19

- Application Data Manager
- Application Groups Data Relationship and Datasets
- Application Info Tiles and Dashboard Hub
- Application KPI Dashboard
- Application Navigation
- Application Pivot Reports

- Data ExStore and Reporting Platform
- Development Tools and Local Configuration
- Introduction to Temenos Data Engineering and Temenos Operational Data Store
- Introduction to Temenos Data Lake
- Predictive Analytics
- Product Introduction - Business
- Product Introduction - Technical
- Quick Reports and Custom Reports
- Temenos Data Engineering and Navigation - Administrator
- Temenos Data Engineering and Navigation - Deployer
- Temenos Data Engineering and Navigation - Designer
- Temenos Data Engineering and Navigation - Scheduler

## R18

- Advanced Concepts
- Advanced Platform
- Application Data Manager
- Application Groups Data Relationship and Datasets
- Application KPI Dashboard
- Application Navigation
- Application Pivot Reports
- Data ExStore and Reporting Platform
- Development Tools and Local Configuration
- Product Overview
- Quick Reports and Custom Reports
- Temenos Implementation Methodology Core Banking

PRICE BAND C: \$600.00 pa

ANNUAL COST WITH  
MEMBERSHIP.

**\$800.00**

# FINANCIAL CRIME MITIGATION

## COURSES AVAILABLE: 10



### R21

- Payment Financial Crime and SaaS Delta Q2-2021
- Products Induction

### R20

- Financial Crime (FCM) Technical Foundation Advanced
- Technologies Induction

### R19

- Financial Crime (FCM) Functional Foundation
- Financial Crime (FCM) Functional Implementation
- Financial Crime (FCM) Technical

Foundation

### R18

- Temenos Implementation Methodology Core Banking
- FCM Business
- FCM Technical

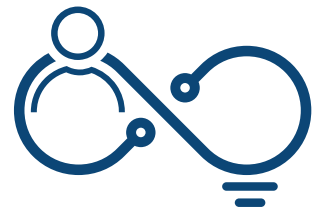
PRICE BAND C: \$600.00 pa

ANNUAL COST WITH  
MEMBERSHIP.

**\$800.00**

# INFINITY – DIGITAL FRONT OFFICE

## COURSES AVAILABLE: 75



### R21

- Delta Training 9.0
- Developer Bootcamp with Visualizer and Fabric 9.0
- Engage
- Essentials
- Infinity Analytics Datalake UXP and XAI Delta Q2-2021
- Journey Analytics Foundation
- Journey Maestro Form Builders
- Journey Manager for Platform Developers
- Journey Manager Operation Cloud
- Journey Manager Operation On Premises
- Journey Manager Platform Overview
- Journey Platform Architecture
- Origination Foundation
- Products Induction
- Quantum Platform Overview
- Retail Banking Apps Foundation
- Small and Medium Enterprise (SME) Banking Part 1

- Small and Medium Enterprise (SME) Banking Part 2
- Spotlight
- Temenos Implementation Methodology Infinity
- UXP Advanced Essentials
- UXP Application Installation
- UXP Enterprise Platform
- UXP Enterprise Team
- UXP Foundation Devices
- UXP Foundation Essentials with Hybrid Apps
- UXP Foundation Live CMS
- UXP Foundation Tables and Charts
- UXP Foundation Temenos Theme

### R20

- Customer Onboarding Foundation
- Engage
- Essentials - Technical
- FCM Business
- FCM Technical
- Financial Crime (FCM) Technical Foundation Advanced

- Delta Training 8.3
- Delta Training 8.4
- Delta Training 9.0
- Developer Bootcamp with Visualizer and Fabric 8.0
- Developer Bootcamp with Visualizer and Fabric 9.0
- Essentials
- Installation
- Products Induction
- Retail Banking Apps Extensibility
- Retail Banking Apps Extensibility Advanced
- Retail Banking Apps Foundation
- Retail Banking Apps Technical Foundation
- Small and Medium Enterprise (SME) Banking
- Spotlight
- Technologies Induction
- Temenos Implementation Methodology Core Banking

## R19

- Journey Analytics Foundation
- Journey Maestro Form Builders
- Journey Manager for Platform Developers
- Journey Manager Operation On Premises
- Journey Manager Platform Overview
- Journey Platform Architecture
- Journey Platform Operation Cloud

- Microservices

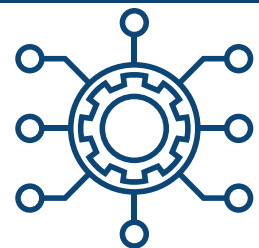
## R18

- Temenos Core Banking Overview
- Temenos Implementation Methodology Core Banking
- Journey Analytics Overview
- Journey Maestro Form Builders
- Journey Manager for Platform Developers
- Journey Manager Operation SaaS
- Journey Manager Platform Overview
- UXP Advanced Essentials
- UXP Application Installation
- UXP Enterprise Platform
- UXP Enterprise Team
- UXP Foundation Devices
- UXP Foundation Essentials with Hybrid Apps
- UXP Foundation Live CMS
- UXP Foundation Tables and Charts
- UXP Foundation Temenos Theme

PRICE BAND B: \$1,200.00 pa

ANNUAL COST WITH  
MEMBERSHIP.

**\$1,400.00**



# TRANSACT – MIGRATION

## COURSES AVAILABLE: 87

## R21

- Browser Navigation
- Business Events Management
- Data Framework Relational Replication
- Design Studio DSF Rules Designer
- Design Studio Enquiry Designer
- Design Studio IRIS RIM Importer
- Design Studio Screen Designer
- DSF Packager Foundation
- TAFC-TAFJ Migration
- Technical Concepts
- Workbench Foundation
- Workbench Installation

## R20

- Architecture Overview
- Close Of Business Management Foundation
- Close Of Business Management Global Processing
- Close Of Business Management Implementation
- Design Studio Advanced Adaptation
- Design Studio Data Eson Designer
- Design Studio DSF Packager
- Design Studio DSF Rules Designer
- Design Studio Enquiry Designer
- Design Studio Foundation
- Design Studio IRIS Foundation
- Design Studio IRIS Published API

- Design Studio IRIS Security
- Design Studio Screen Designer
- Design Studio Temenos Workbench Foundation
- Extensibility for Java
- IIB Custom Adapter
- Integration Framework Inflow Foundation
- Integration Framework Inflow Implementation
- Integration Framework Inflow PW Implementation
- Integration Framework Overview
- Programming Foundation
- Programming Routines
- Programming Templates
- System Management
- TAFC-TAFJ Migration
- TAFJ Foundation
- Technical Concepts
- Temenos eXplainable Artificial Intelligence (XAI)
- Updates and Upgrade

## R19

- Administration
- Browser Navigation
- Close Of Business Management
- Customisation
- Data Framework Relational Replication
- Data Life Cycle Management
- Design Studio Advanced Adaptation
- Design Studio Data Eson Designer
- Design Studio Enquiry Designer
- Design Studio Foundation
- Design Studio Integration Framework Designer
- Design Studio IRIS Event Processing
- Design Studio IRIS Foundation
- Design Studio IRIS Publishing API
- Design Studio IRIS RIM Importer
- Design Studio IRIS Security

- Design Studio Process Workflow Designer
- Design Studio SCM Integration
- Design Studio Screen Designer
- Design Studio T24 Extensibility for Java
- FO PM Design Studio Administration
- IIB Custom Adapter
- Integration Framework Runtime
- Open Financial Service
- Packaging and Deployment Utilities
- Programming Foundation
- Programming Routines
- Programming Templates
- Security Management System
- TAFJ (Temenos Application Framework Java)
- Technical Concepts
- Updates and Upgrade
- Web Services

## R18

- Architecture
- Arrangement Architecture Core
- Arrangement Architecture Core - Technical
- Browser Navigation
- Business Events Management
- Design Studio for Core Change Management
- Installation
- Interaction Framework IRIS
- Open Financial Service
- System Management
- Temenos Implementation Methodology Core Banking
- FO PM Design Studio Administration

PRICE BAND C: \$600.00 pa

ANNUAL COST WITH  
MEMBERSHIP.

**\$800.00**



## TRANSACT – UPGRADE COURSES AVAILABLE: 29

### R21

- Browser Navigation

- TAFC-TAFJ Migration
- Technical Concepts

## R20

- Architecture Overview
- Extensibility for Java
- Programming Foundation
- Programming Routines
- Programming Templates
- System Management
- Updates and Upgrade
- TAFC-TAFJ Migration
- TAFJ Foundation
- Technical Concepts

## R19

- Administration
- Browser Navigation
- Customisation
- Programming Foundation
- Programming Routines
- Programming Templates
- Security Management System
- TAFJ (Temenos Application Framework

Java)

- Technical Concepts
- Updates and Upgrade

## R18

- Architecture
- Browser Navigation
- Essentials of Core Banking Programming
- Installation
- System Management
- Temenos Implementation Methodology Core Banking

PRICE BAND C: \$600.00 pa

ANNUAL COST WITH  
MEMBERSHIP.

**\$800.00**

# TLC ONLINE PREMIUM PACK

## COURSES AVAILABLE: 600+



All of our specialist packs offer great value and allow our members to focus on the training that matters to them most. However, many of our members still prefer to opt for our Premium membership. Premium membership still offers exceptional value, providing access to all of the training tools, materials, courses and exams contained

in the packs already listed. It also provides access to other courses as yet unavailable through any of our other learning packs. If you want the most versatile, unlimited and unrestricted access to Temenos Online training and certification we have to offer, then a TLC Premium Membership could be right for you.

## Analytics

### R21

- Application Navigation
- Introduction to Data Event Streaming (DES)
- Quick Reports
- Temenos Data Engineering and Navigation - Designer
- Temenos Data Engineering and Navigation - Scheduler
- Transact Data Hub Data Lake Dataflow and Configuration

### R20

- Application Groups Data Relationship and Datasets
- Application KPI, Information Tiles and Dashboard
- Application Navigation
- Introduction to Data Event Streaming (DES)
- Product Introduction - Business
- Quick Reports and Custom Reports
- Temenos Data Engineering and Navigation - Administrator
- Temenos Data Engineering and Navigation - Deployer
- Temenos Data Engineering and Navigation - Designer
- Temenos Data Engineering and Navigation - Scheduler
- Temenos Data Engineering Architecture in

Transact Data Hub, Temenos Data Lake and Analytics

- Transact Data Hub, Temenos Data Lake and Temenos Analytics Overview

### R19

- Application Data Manager
- Application Groups Data Relationship and Datasets
- Application Info Tiles and Dashboard Hub
- Application KPI Dashboard
- Application Navigation
- Application Pivot Reports
- Data ExStore and Reporting Platform
- Development Tools and Local Configuration
- Introduction to Temenos Data Engineering and Temenos Operational Data Store
- Introduction to Temenos Data Lake
- Predictive Analytics
- Product Introduction - Business
- Product Introduction - Technical
- Quick Reports and Custom Reports
- Temenos Data Engineering and Navigation - Administrator
- Temenos Data Engineering and Navigation - Deployer
- Temenos Data Engineering and Navigation - Designer
- Temenos Data Engineering and Navigation - Scheduler

## R18

- Advanced Concepts
- Advanced Platform
- Application Data Manager
- Application Groups Data Relationship and Datasets
- Application KPI Dashboard
- Application Navigation
- Application Pivot Reports
- Data ExStore and Reporting Platform
- Development Tools and Local Configuration
- Product Overview
- Quick Reports and Custom Reports

## Core Banking

### R21

- AA Safe Deposit Box Implementation
- AC Accounts Foundation
- Browser Navigation
- Business Events Management
- Cloud Data Migration
- Cloud Deployment
- Confirmation Matching Implementation
- Customer Foundation Part 1
- Customer Foundation Part 2
- Data Framework Relational Replication
- Design Studio IRIS RIM Importer
- Factoring and Forfaiting (Bills) Implementation
- Financial Accounting and Reporting Foundation
- Financial Accounting Implementation Part 1
- Financial Accounting Implementation Part 2
- Financial Inclusion Foundation
- Forward Rate Agreements Implementation (FRA)
- Interest, Taxes and Charges Foundation
- Interest, Taxes and Charges Implementation
- Kubernetes on Google Cloud
- Limits Foundation Part 1
- Limits Foundation Part 3
- Loans and Deposits
- Microservices and Transact on AWS Cloud
- Model Bank On Dockers
- Multi-Company - Multi-Book Implementation
- Origination Architecture Basic Implementation

- Past Dues Implementation
- Post Closing Implementation
- PSD2 Account Information Implementation
- PSD2 Payments Implementation
- Securities Administration and Trading
- Syndicated Loans Implementation
- Temenos Cloud Induction
- Temenos Implementation Methodology Cloud
- Temenos Implementation Methodology Infinity
- Transact Securities Administration
- Treasury Front Office Implementation

### R20

- AA Common Building Blocks Implementation
- AA Deposits Foundation Part 1
- AA Deposits Foundation Part 2
- AA Deposits Product Building Implementation
- AA Implementation
- AA Lending Foundation Part 1
- AA Lending Foundation Part 2
- AA Lending Product Building Implementation
- AA Retail Accounts Foundation Part 1
- AA Retail Accounts Foundation Part 2
- AA Rewards Implementation
- AA Technical Customisation
- AA Technical Integration
- AA Technical Overview
- AA Technical Programming
- AC Accounts Foundation
- AC Accounts Implementation
- Architecture Overview
- Balance Netting Implementation
- Cash Pooling Implementation
- Cheque and Draft Management Foundation
- Cheque and Draft Management Implementation
- Close Of Business Management Foundation
- Close Of Business Management Global Processing
- Close Of Business Management Implementation
- Collateral Foundation Part 1
- Collateral Foundation Part 2
- Collateral Implementation
- Collections Implementation
- Common Reporting Standards Implementation
- Corporate Actions
- Corporate Lending Implementation
- Customer Data Protection Implementation
- Data Event Streaming (DES)
- Derivatives Administration



- Design Studio Advanced Adaptation
- Design Studio Data Eson Designer
- Design Studio DSF Packager
- Design Studio DSF Rules Designer
- Design Studio Enquiry Designer
- Design Studio Foundation
- Design Studio IRIS Foundation
- Design Studio IRIS Published API
- Design Studio IRIS Security
- Design Studio Process Workflow Designer
- Design Studio Screen Designer
- Design Studio Temenos Workbench Foundation
- Essentials
- Extensibility for Java
- Financial Accounting and Reporting Foundation
- Financial Accounting Implementation
- Financial Reporting Implementation
- IIB Custom Adapter
- Integration Framework Inflow Foundation
- Integration Framework Inflow Implementation
- Integration Framework Inflow PW Implementation
- Integration Framework Overview
- Interest, Taxes and Charges Foundation
- Interest, Taxes and Charges Implementation
- Letters of Credit Implementation
- Limits Foundation Part 1
- Limits Foundation Part 2
- Limits Implementation
- Local Clearing Implementation
- Microservices Advanced Concepts Implementation
- Microservices Creating a Microservice Implementation
- Microservices Foundation
- Miscellaneous Deals Implementation
- Multi-Company - Multi-Book
- Products Induction
- Programming Foundation
- Programming Routines
- Programming Templates
- Provisioning Implementation
- Securities Administration
- Securities Administration and Trading
- Securities Back Office Foundation
- Securities Back Office Implementation
- Securities Foundation
- Settlements on Securities

- System Management
- T24 Securities Trading and Management
- TAFC-TAFJ Migration
- TAFJ Foundation
- Technical Concepts
- Technologies Induction
- Temenos eXplainable Artificial Intelligence (XAI)
- Updates and Upgrade

## R19

- AA Account Product Building Implementation
- AA Agent Commission Implementation
- AA Common Building Blocks Implementation
- AA Deposits Foundation Part 1
- AA Deposits Foundation Part 2
- AA Deposits Product Building Implementation
- AA External Product Implementation
- AA Implementation
- AA Lending Foundation Part 1
- AA Lending Foundation Part 2
- AA Lending Product Building Implementation
- AA Retail Accounts Foundation Part 1
- AA Retail Accounts Foundation Part 2
- AA Rewards Implementation
- AA Safe Deposit Box Implementation
- AC Accounts Foundation
- Administration
- Balance Netting Implementation
- Browser Navigation
- Cheque and Draft Management Implementation
- Close Of Business Management
- Collateral Foundation Part 1
- Collateral Foundation Part 2
- Collateral Implementation
- Common Reporting Standards Implementation
- Confirmation Matching Implementation
- Consent Management Implementation
- Customisation
- Customer Data Protection Implementation
- Customer Foundation Part 1
- Data Framework Relational Replication
- Data Life Cycle Management
- Design Studio Advanced Adaptation
- Design Studio Data Eson Designer
- Design Studio Enquiry Designer
- Design Studio Foundation
- Design Studio Integration Framework Designer
- Design Studio IRIS Event Processing
- Design Studio IRIS Foundation



- Design Studio IRIS Publishing API
- Design Studio IRIS RIM Importer
- Design Studio IRIS Security
- Design Studio Process Workflow Designer
- Design Studio SCM Integration
- Design Studio Screen Designer
- Design Studio T24 Extensibility for Java
- Essentials
- Factoring and Forfaiting (Bills) Implementation
- Financial Accounting and Reporting Foundation
- Financial Accounting Implementation
- Financial Reporting Implementation
- Forex
- Forward Rate Agreements Implementation (FRA)
- IIB Custom Adapter
- Integration Framework Runtime
- Interest, Taxes and Charges Foundation
- Interest, Taxes and Charges Implementation
- Letters of Credit Implementation
- Limits Foundation Part 1
- Limits Foundation Part 2
- Loans and Deposits
- Local Clearing Implementation
- Miscellaneous Deals Implementation
- Money Market
- Mule Adapter
- Multi-Company - Multi-Book
- Nostro Reconciliation Implementation
- Open Financial Service
- Origination Architecture Basic Implementation
- Packaging and Deployment Utilities
- Past Dues Implementation
- Position Management Implementation
- Post Closing Implementation
- Programming Foundation
- Programming Routines
- Programming Templates
- Provisioning Implementation
- Security Management System
- Swaps Implementation
- Syndicated Loans Implementation
- TAFJ (Temenos Application Framework Java)
- Technical Concepts
- Transaction Cyclor Implementation
- Treasury Front Office Implementation
- Updates and Upgrade

- Web Services

## R18

- AA Common Building Blocks Implementation
- AA Deposits Foundation Part 1
- AA Deposits Foundation Part 2
- AA Implementation
- AA Loans Foundation Part 1
- AA Loans Foundation Part 2
- AA Retail Accounts Foundation Part 1
- AA Retail Accounts Foundation Part 2
- AA Safe Deposit Box Implementation
- AA Technical Customisation
- AA Technical Integration
- AA Technical Overview
- AA Technical Programming
- AC Accounts Foundation
- Architecture
- Arrangement Architecture Agent
- Arrangement Architecture Core
- Arrangement Architecture Core - Technical
- Arrangement Architecture Relationship Pricing
- Arrangement Architecture Rewards
- Bills
- Browser Navigation
- Business Events Management
- Cash Pooling (Liquidity Management)
- Cheque and Draft Management Foundation
- COB Management
- Collateral Foundation Part 1
- Collateral Foundation Part 2
- Collateral Implementation
- Collections Implementation
- Common Reporting Standard
- Consent Management Implementation
- Customer Data Protection Implementation
- Customer Foundation Part 1
- Customer Foundation Part 2
- Design Studio for Core Change Management
- Essentials
- Essentials of Core Banking Programming
- Financial Accounting and Reporting Foundation
- Financial Reporting
- Installation
- Interaction Framework IRIS
- Letters of Credit (Trade Finance)
- Limits Foundation Part 1
- Limits Foundation Part 2
- Limits Implementation
- Multi-Company / Multi-Book

- Open Financial Service
- Past Dues
- Process Workflow
- Provisioning
- PSD2 Account Information
- Retail Sweeping
- Securities Foundation
- Syndicated Loans
- System Management
- Temenos Core Banking Overview
- Temenos Implementation Methodology Core Banking

## Financial Crime

### R20

- Financial Crime (FCM) Technical Foundation
- Financial Crime (FCM) Technical Foundation Advanced

### R19

- Financial Crime (FCM) Functional Foundation
- Financial Crime (FCM) Functional Implementation

### R18

- FCM Business
- FCM Technical

## Fund Admin

### R21

- Data Segregation and Data Masking
- Global Investor Anti Dilution Levy (ADL)
- Global Investor Anti-Money Laundering (AML) Foundation
- Global Investor Contingent Deferred Sales Charge (CDSC)
- Global Investor Foreign Account Tax Compliance Act (FATCA) and Common Reporting Standard (CRS) Foundation
- Global Investor Foundation
- Global Investor General Ledger
- Global Investor Receipts
- SQL Technical
- Technical Data Mart for Global Accounting
- Technical Data Mart for Global Investor
- Technical Performance Tuning for Global Accounting

- Technical Single Sign On (SSO)
- Workflow and Exception Monitor (WEM) Technical

### R20

- Data Segregation and Data Masking
- Global Accounting Data Mart and Investment Book Of Records (IBOR) Foundation
- Global Accounting Derivatives
- Global Accounting Equalisation
- Global Accounting Foundation
- Global Accounting Fund Pricing
- Global Accounting Fund Structure
- Global Accounting Implementation
- Global Accounting Valuation Method
- Global Accounting Workflow and Exception Monitor (WEM)
- Global Investor Anti Dilution Levy (ADL)
- Global Investor Anti-Money Laundering (AML) Foundation
- Global Investor Contingent Deferred Sales Charge (CDSC)
- Global Investor Data Mart Foundation
- Global Investor Foreign Account Tax Compliance Act (FATCA) and Common Reporting Standard (CRS) Foundation
- Global Investor Foundation
- Global Investor General Ledger
- Global Investor Receipts
- Global Investor Tax
- Global Investor Workflow and Exception Monitor (WEM)
- SQL Technical
- Technical Data Mart for Global Accounting
- Technical Data Mart for Global Investor
- Technical Single Sign On (SSO)
- Workflow and Exception Monitor (WEM) Technical

### R19

- Anti Dilution Levy (ADL) Points
- Automation Framework
- Coding Standards
- Contingent Deferred Sales Charge (CDSC)
- Data Mart in Multifonds Global Accounting (MFGA)
- Data Mart in Multifonds Global Investor (MFGI)
- Data Segregation and Data Masking
- Financial Market Basics
- General Ledger

- Guideline for SUP Database
- Induction Basic Multifonds Global Accounting (MFGA)
- Induction Basic Multifonds Global Investor (MFGI)
- Oracle Test Manager (OTM) and Oracle Functional Testing (OFT)
- Receipts
- Single Sign On (SSO) Architecture and Workflow
- SQL
- SQL and PL SQL Best Practices
- SVN
- Taxes
- Technical Support Basics Introduction
- Temenos Multifonds University (TMFU) Workflow and Exception Monitor (WEM)
- Users Screen

## R18

- Temenos Implementation Methodology Core Banking

## Infinity

## R21

- Delta Training 9.0
- Developer Bootcamp with Visualizer and Fabric 9.0
- Engage
- Essentials
- Journey Analytics Foundation
- Journey Maestro Form Builders
- Journey Manager for Platform Developers
- Journey Manager Operation Cloud
- Journey Manager Operation On Premises
- Journey Manager Platform Overview
- Journey Platform Architecture
- Origination Foundation
- Quantum Platform Overview
- Retail Banking Apps Foundation
- Small and Medium Enterprise (SME) Banking Part 1
- Small and Medium Enterprise (SME) Banking Part 2
- Spotlight
- UXP Advanced Essentials
- UXP Application Installation
- UXP Enterprise Platform
- UXP Enterprise Team
- UXP Foundation Devices

- UXP Foundation Essentials with Hybrid Apps
- UXP Foundation Live CMS
- UXP Foundation Tables and Charts
- UXP Foundation Temenos Theme

## R20

- Customer Onboarding Foundation
- Delta Training 8.2
- Delta Training 8.3
- Delta Training 8.4
- Delta Training 9.0
- Developer Bootcamp with Visualizer and Fabric 8.0
- Developer Bootcamp with Visualizer and Fabric 9.0
- Engage
- Essentials
- Essentials - Technical
- Installation
- Retail Banking Apps Extensibility
- Retail Banking Apps Extensibility Advanced
- Retail Banking Apps Foundation
- Technical Data Mart for Global Accounting
- Small and Medium Enterprise (SME) Banking
- Spotlight

## R19

- Journey Analytics Foundation
- Journey Maestro Form Builders
- Journey Manager for Platform Developers
- Journey Manager Operation On Premises
- Journey Manager Platform Overview
- Journey Platform Architecture
- Journey Platform Operation Cloud
- Microservices

## R18

- Journey Analytics Overview
- Journey Maestro Form Builders
- Journey Manager for Platform Developers
- Journey Manager Operation SaaS
- Journey Manager Platform Overview
- UXP Advanced Essentials
- UXP Application Installation
- UXP Enterprise Platform
- UXP Enterprise Team
- UXP Foundation Devices
- UXP Foundation Essentials with Hybrid Apps
- UXP Foundation Live CMS
- UXP Foundation Tables and Charts
- UXP Foundation Temenos Theme

# Islamic Banking

## R21

- Islamic Finance Bai Salam Implementation
- Islamic Finance Diminishing Musharaka Implementation
- Islamic Finance Ijara Implementation
- Islamic Finance Qard Hasan Implementation
- Islamic Finance Wakala Musawama Implementation
- Profit Distribution System Implementation

## R20

- Profit Distribution System Implementation

## R19

- Islamic Banking Concepts
- Islamic Finance Bai Salam Implementation
- Islamic Finance Commodity Murabaha Implementation
- Islamic Finance Diminishing Musharaka Implementation
- Islamic Finance Ijara Implementation
- Islamic Finance Murabaha Implementation
- Islamic Finance Qard Hasan Implementation
- Islamic Finance Wakala Musawama Implementation
- Islamic Finance Workflow
- Profit Distribution System Implementation

# Payment

## R21

- Cheque Collection Implementation
- Initiation Implementation

## R20

- Clearing Framework
- Clearing Implementation
- Funds Transfer
- Instant Payments Implementation
- Payment Hub Foundation - Part 1
- Payment Hub Foundation - Part 2
- Payment Hub Implementation
- Payment Initiation Implementation
- Repair Designer
- SWIFT GPI

## R19

- Cheque Collection
- Clearing Framework
- Clearing Implementation
- Direct Debits
- Expected Receipts Implementation
- Funds Transfer
- Instant Payments Implementation
- Payment Hub Implementation
- Payment Initiation Implementation
- Standalone Payment Hub
- Teller Foundation Part 1
- Teller Foundation Part 2
- Teller Implementation

## R18

- Direct Debits
- Funds Transfer
- Instant Payments
- Payment Initiation
- PSD2 Payments
- Teller Foundation Part 1
- Teller Implementation
- Temenos Payment Hub
- Understanding Teller Advanced

# Regional Banking

## R21

- UKMB BBSI Reporting
- UKMB Financial Services Compensation Scheme (FSCS)
- UKMB FSCS Continuity of Access
- UKMB Return Direct Credit
- UKMB Static Data

## R20

- USMB Demo Session Kickoff

## R18

- CAMB AA Deposits
- CAMB AA Loans
- CAMB AA Product Builder
- CAMB AA Retail Accounts Foundation
- CAMB Collateral
- CAMB Core Banking Overview
- CAMB Customer Foundation
- CAMB Limits
- CAMB Navigation
- CAMB Payments and Clearing

- CAMB Security Management System (SMS)
- USMB AA Deposits
- USMB AA Product Builder
- USMB AA Retail Accounts Advanced
- USMB AA Retail Accounts Foundation
- USMB AA Safe Deposit Box
- USMB Account Analysis Advanced
- USMB Account Analysis Foundation
- USMB Automated Clearing House Payments
- USMB Bundling
- USMB Cash Pooling
- USMB Funds Transfer
- USMB General Ledger
- USMB Individual Retirement Accounts
- USMB Loan Development
- USMB Navigation
- USMB Non Sufficient Funds
- USMB Platform Parameters
- USMB Regulations
- USMB Relationship Pricing

## Risk and Compliance

### R20

- FATCA Client Identification Implementation
- FATCA Reporting Implementation
- FATCA Withholding Implementation

### R19

- FATCA Client Identification Implementation
- FATCA Reporting Implementation
- FATCA Withholding Implementation
- IFRS (International Financial Reporting Standards) Implementation

### R18

- Credit Risk
- IFRS (International Financial Reporting Standards)
- Liquidity Risk
- Market Risk
- Technical Risk

## TLC

### R21

- Engine Functionality
- Fund Administration and Wealth

Management Delta Q2-2021

- Fund Administration and Wealth Management Delta Q3-2021
- Infinity Analytics Datalake UXP and XAI Delta Q2-2021
- Payment Financial Crime and SaaS Delta Q2-2021
- Transact Development And Operations Delta Q2-2021
- Transact Development And Operations Delta Q3-2021
- Transact Functional 1 Delta Q2-2021
- Transact Functional 2 Delta Q2-2021
- Transact Functional 2 Delta Q3-2021

### R20

- Engine

## Temenos

### R21

- Browser Navigation
- Corporate Actions
- Corporate Lending Implementation Part 2
- Design Studio Enquiry Designer
- Design Studio Screen Designer
- DSF Packager Foundation
- Financial Reporting Implementation
- Interest Taxes and Charges Foundation
- Interest Taxes and Charges Implementation
- Mule Adapter
- Multi-Company - Multi-Book Implementation
- Products Induction
- SaaS 2.0 Essentials
- Securities Administration
- Securities Back Office Foundation
- TAFC-TAFJ Migration
- Technical Concepts
- Workbench Foundation

### R20

- Design Studio DSF Packager
- Products Induction
- Technologies Induction

## Transact

### R21

- AA Retail Accounts Foundation Part 2
- Balance Netting Implementation

- Design Studio DSF Rules Designer
- Kubernetes on Azure Cloud
- Microservices Foundation
- Temenos Advanced Collection (TAC)
- Workbench Installation

## Wealth Management

### R21

- CH IB Retail Essentials for Administration
- CH IB Retail Essentials for Business
- CH Real Time Engagement (Digital Engagement)
- FO PM Architecture
- FO PM Data Administration and Security Overview
- FO PM Design Studio Odata API
- FO PM Installation (Oracle)
- FO PM IPO Subscription
- FO PM Monitoring and Performance
- FO PM Operations and Positions
- FO PM Order Management
- FO PM Portfolio Strategies
- FO PM Questionnaire
- FO PM Scripts and Formats
- FO PM System Management
- FO PM TSL Administration
- WS TTI Architecture
- WS TTI Cash and Securities
- WS TTI Client and Portfolio
- WS TTI Functional Concepts
- WS TTI Order Management

### R20

- CH PM B2F
- FO PM Advisory
- FO PM B2F
- FO PM Data Administration and Security Overview
- FO PM F2B
- FO PM Operations and Positions
- FO PM Portfolio Strategies
- FO PM Questionnaire
- FO PM Scripts and Formats
- WealthSuite Overview

### R19

- CH PM Adaptation
- CH PM B2F
- Datasource Architecture
- Datasource Installation

- FO Customer Relationship Manager
- FO PM Advanced Constraint Management
- FO PM Advanced Performance Analysis - Attribution
- FO PM Advanced Performance Analysis - Standard
- FO PM Design Studio Administration
- FO PM Design Studio Foundation
- FO PM Design Studio WUI Adaptation
- FO PM Design Studio WUI Processes
- FO PM IPO Subscription
- FO PM Operations and Positions
- FO PM Order Management
- FO PM Portfolio Strategies
- FO PM Questionnaire
- FO PM Reporting Adaptation
- FO PM Reporting Foundation
- FO PM Scripts and Formats
- WS TTI Foundation

### R18

- CH IB Retail Essentials for Administration
- CH IB Retail Essentials for Business
- CH IB Retail Essentials for Business and Administration
- CH PM Advisory
- CH PM B2F
- CH PM F2B
- CH Real Time Engagement (Digital Engagement)
- FO Delivery
- FO Document Management
- FO PM Advanced Constraint Management
- FO PM Advanced Performance Analysis - Attribution
- FO PM Advanced Performance Analysis - Standard
- FO PM Advisory
- FO PM Architecture
- FO PM B2F
- FO PM Data Administration and Security Overview
- FO PM Design Studio Administration
- FO PM Design Studio Foundation
- FO PM Design Studio Odata API
- FO PM Design Studio WUI Adaptation
- FO PM Design Studio WUI Processes
- FO PM F2B
- FO PM Installation (Oracle)
- FO PM Installation (Sybase)
- FO PM Monitoring and Performance

- FO PM Operations and Positions
- FO PM Order Management
- FO PM Portfolio Strategies
- FO PM Questionnaire
- FO PM Scripts and Formats
- FO PM System Management
- FO PM TSL Administration
- FO TTI Foundation
- WealthSuite Overview
- WS TTI Architecture
- WS TTI Cash and Securities
- WS TTI Client and Portfolio

- WS TTI Functional Concepts
- WS TTI Order Management

PRICE BAND A: \$1,800.00 pa

ANNUAL COST WITH  
MEMBERSHIP.

**\$2,000.00**



# TLC ENGINE LITE

Cloud based, subscription access to TLC Engine platform allowing a greater understanding of our Temenos Standard Model Bank processes



## 365 X 24 X 7 ACCESS

Anytime, anywhere  
annual cloud based  
access



## OUT OF THE BOX SOP

Pre-loaded with  
Temenos Standard  
Operating  
Procedures



## OFFICIAL TRAINING COLLATERAL

Simulations, videos  
and tutorials



## GLOBAL COMMUNITY

Access to our TLC  
network of members



## TESTING AND CERTIFICATION

Engine specific testing  
and certification  
programs

**NOTE:** Users of TLC ENGINE LITE will be unable to create and upload additional processes or modify the standard Model Bank ones provided.

The TLC ENGINE LITE pack is NOT included in the Premium pack.

PRICE BAND B: \$1,200.00 pa

ANNUAL COST WITH  
MEMBERSHIP. **\$1,400.00**

©2021 Temenos Headquarters SA - all rights reserved.

Warning: This document is protected by copyright law and international treaties. Unauthorised reproduction of this document, or any portion of it, may result in severe and criminal penalties, and will be prosecuted to the maximum extent possible under law.